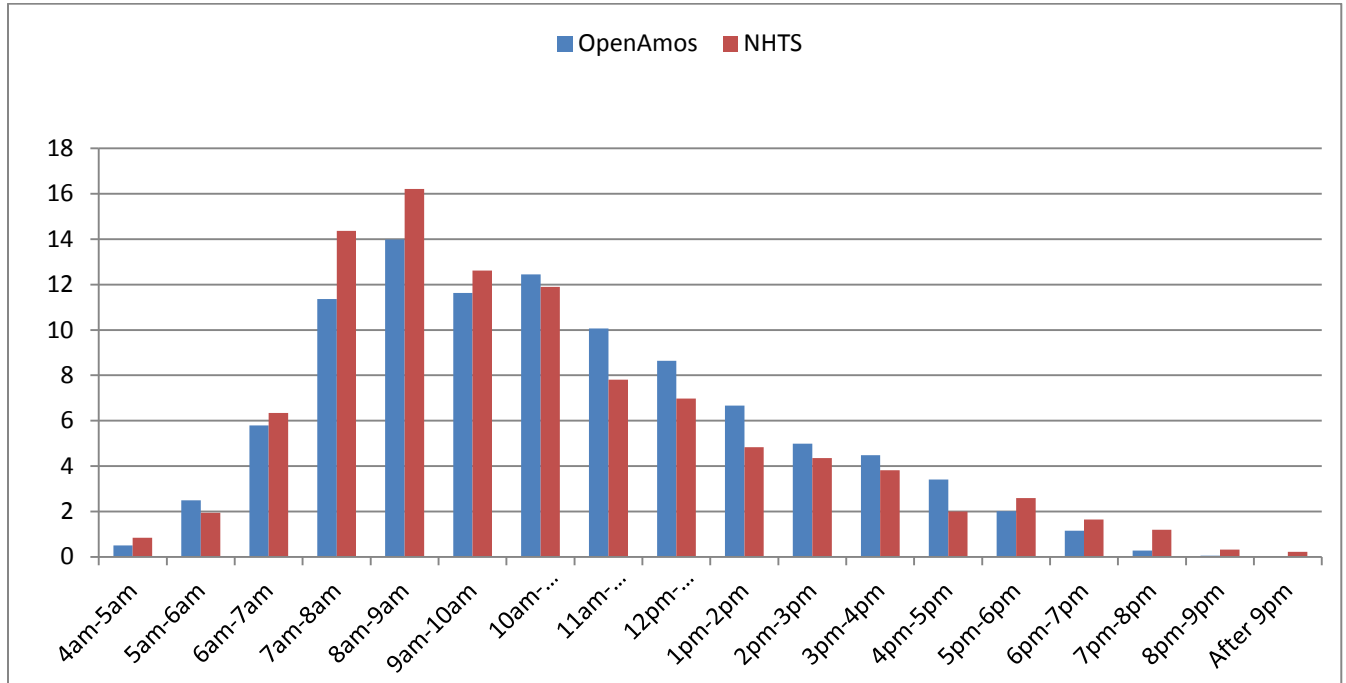
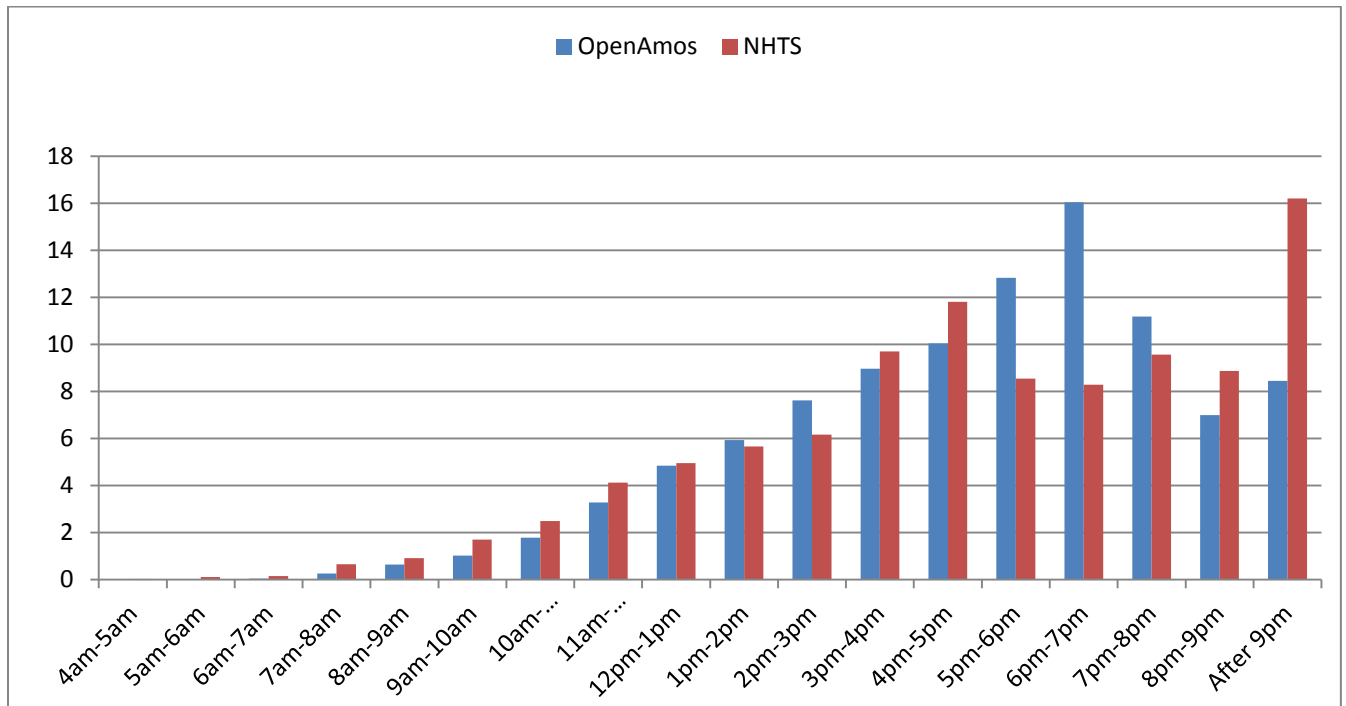


## ADULT NONWORKER

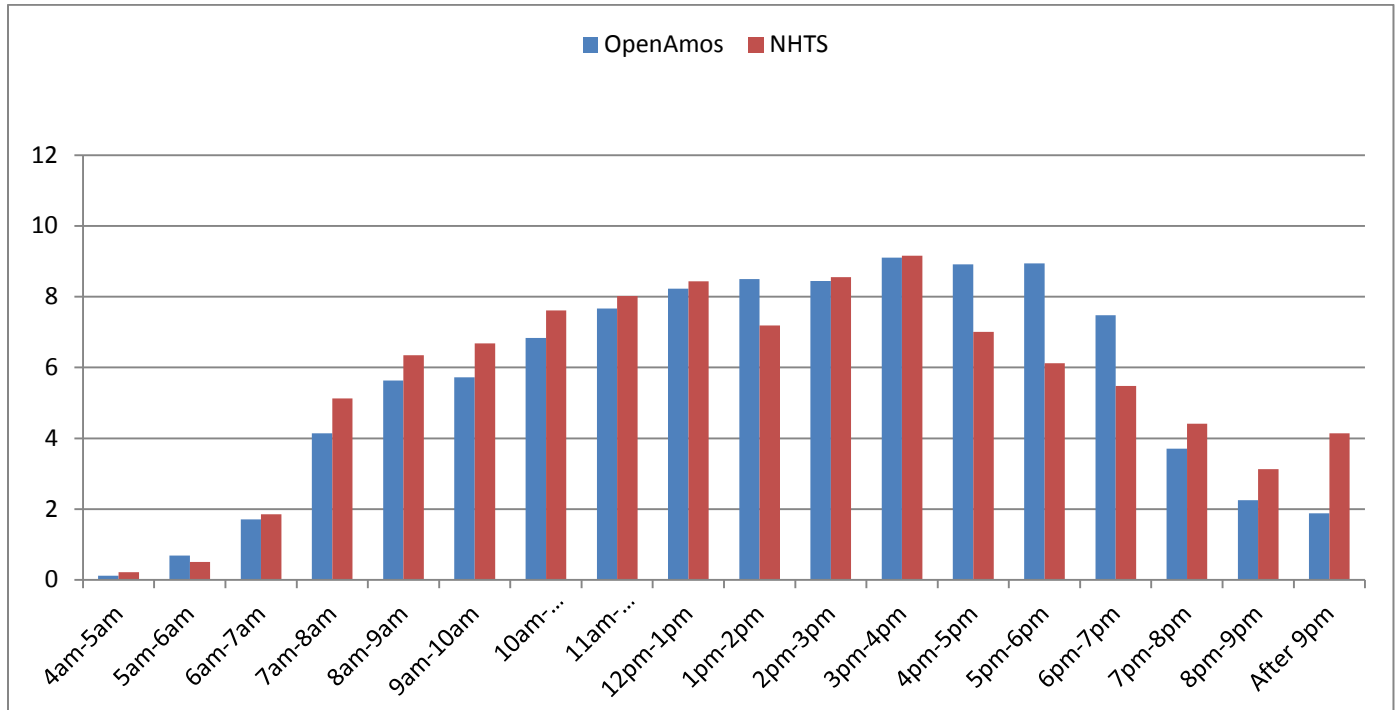
### 1. Earliest start of day



### 2. Latest end of day

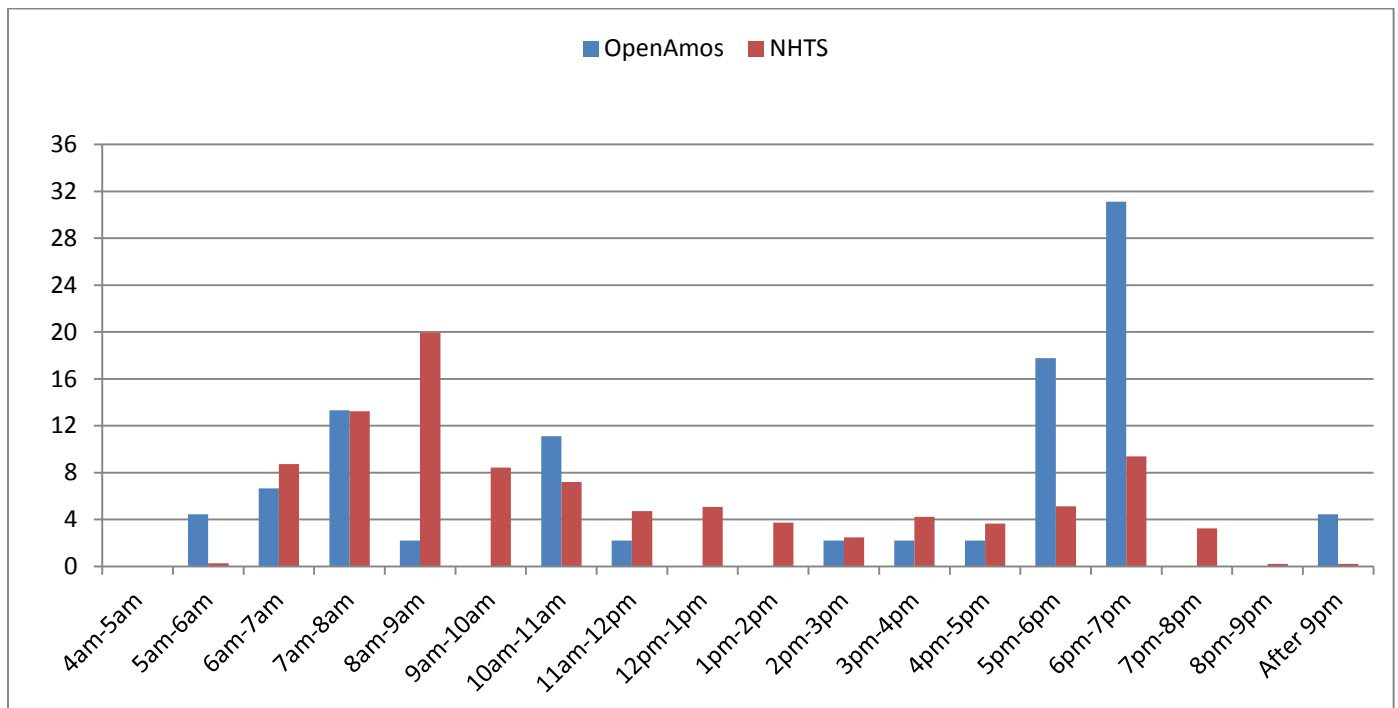


### 3. Trip start time distribution

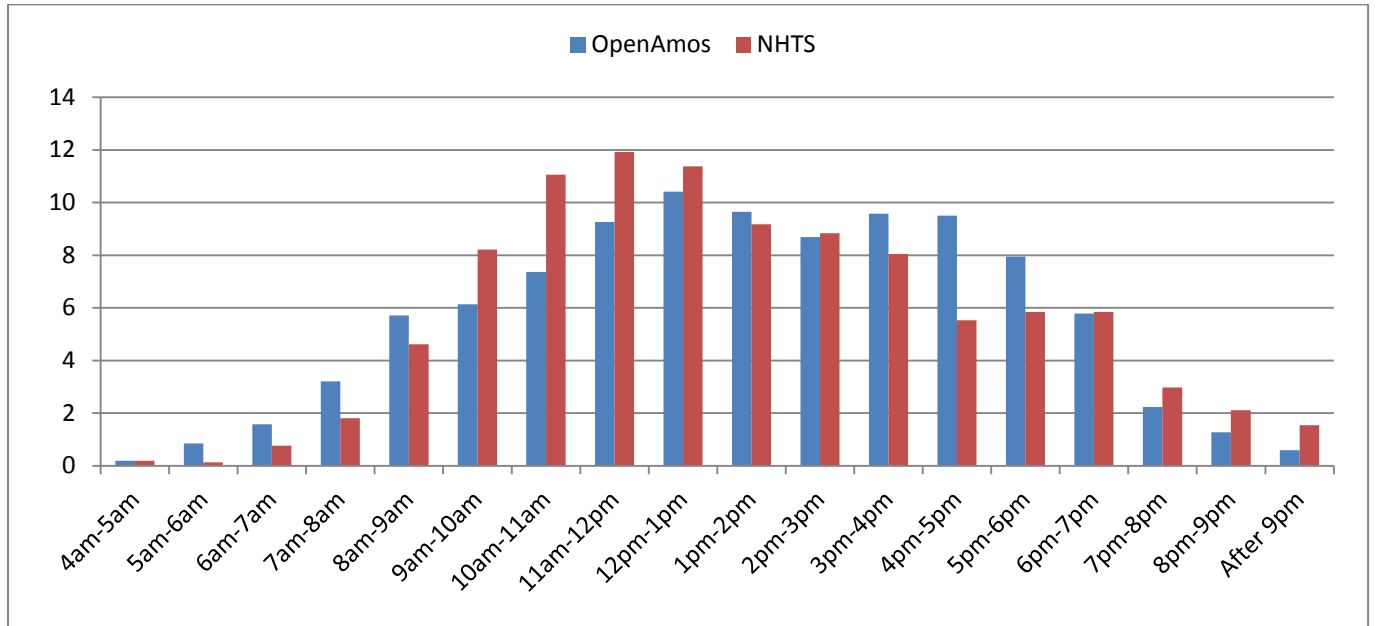


### 4. Trip start time distribution by purpose

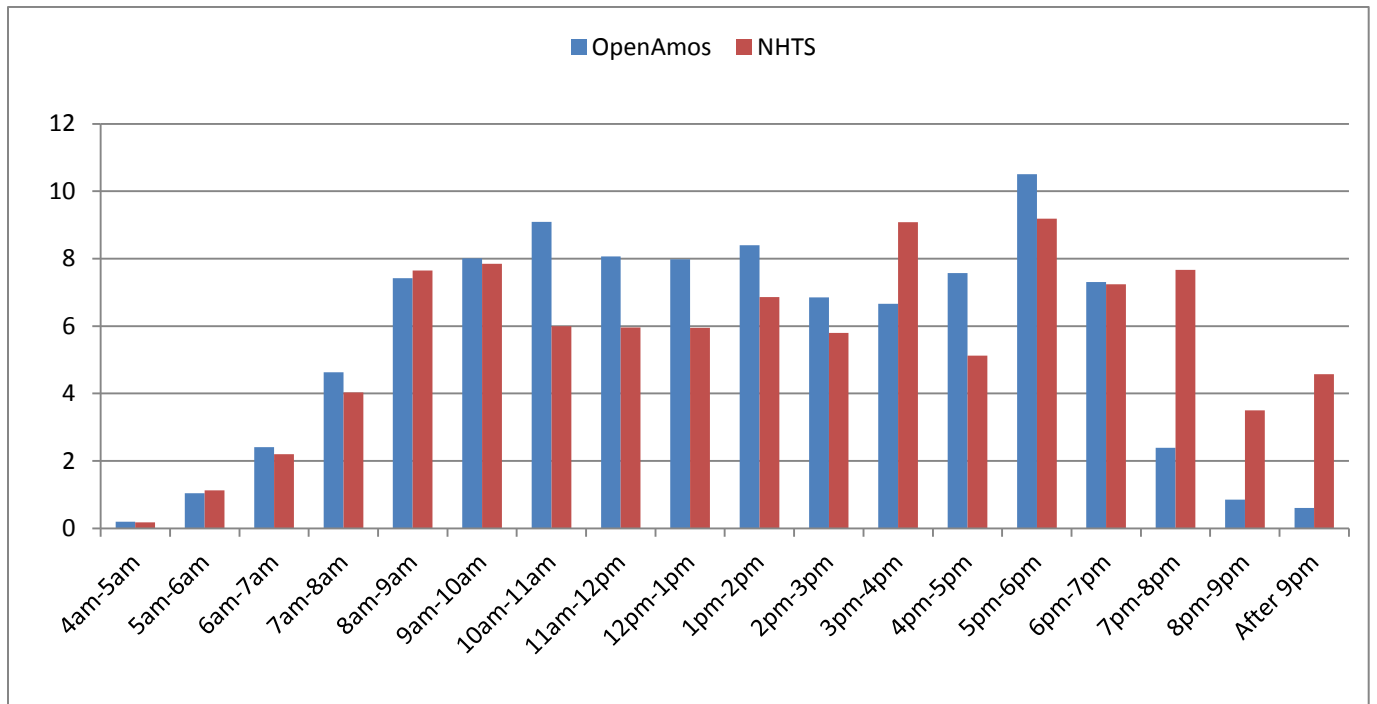
- *Trip start time distribution for school*



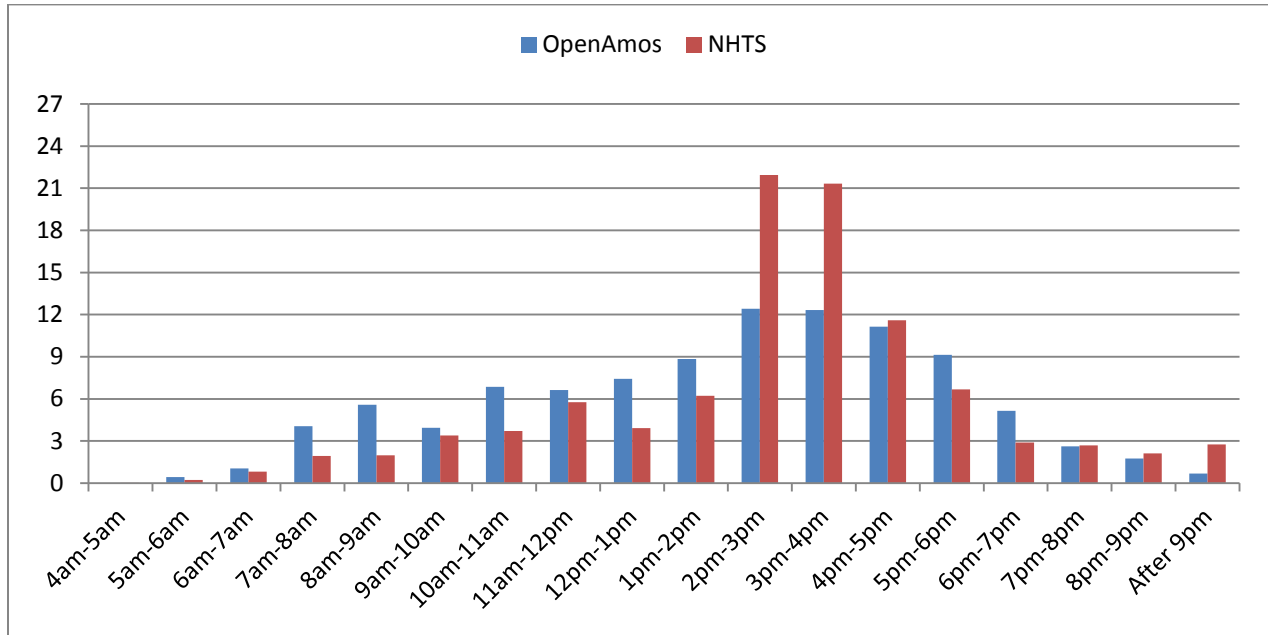
- *Trip start time distribution for maintenance activities*



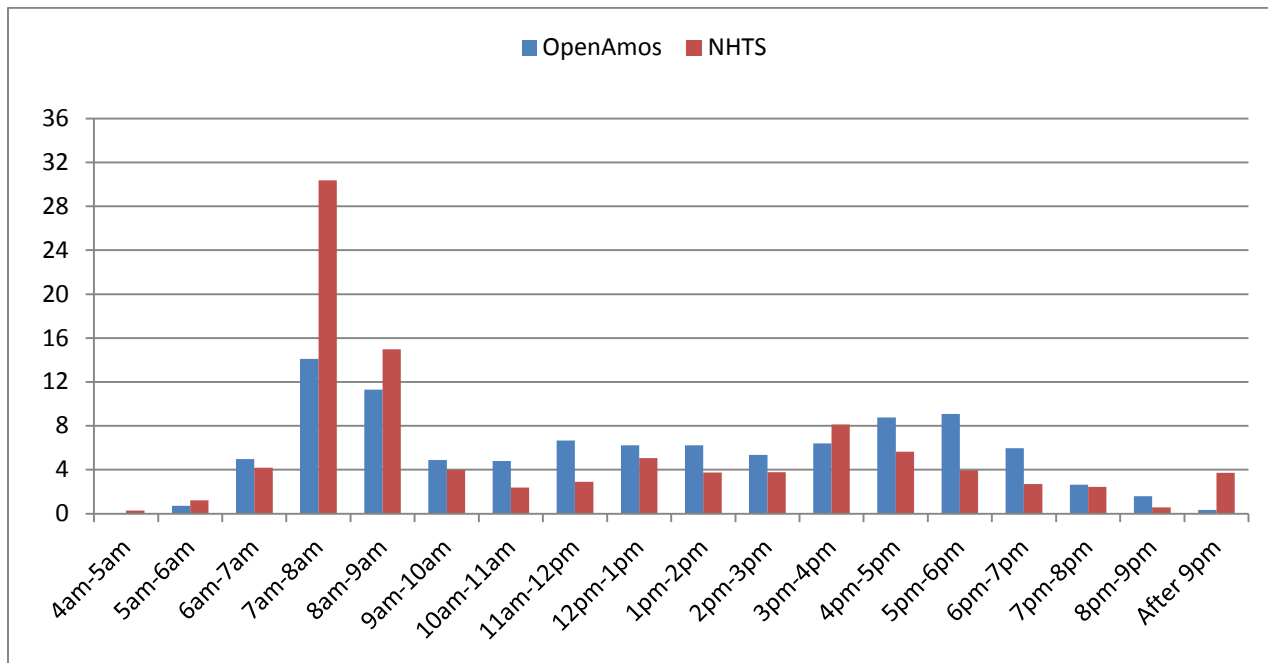
- *Trip start time distribution for discretionary activities*



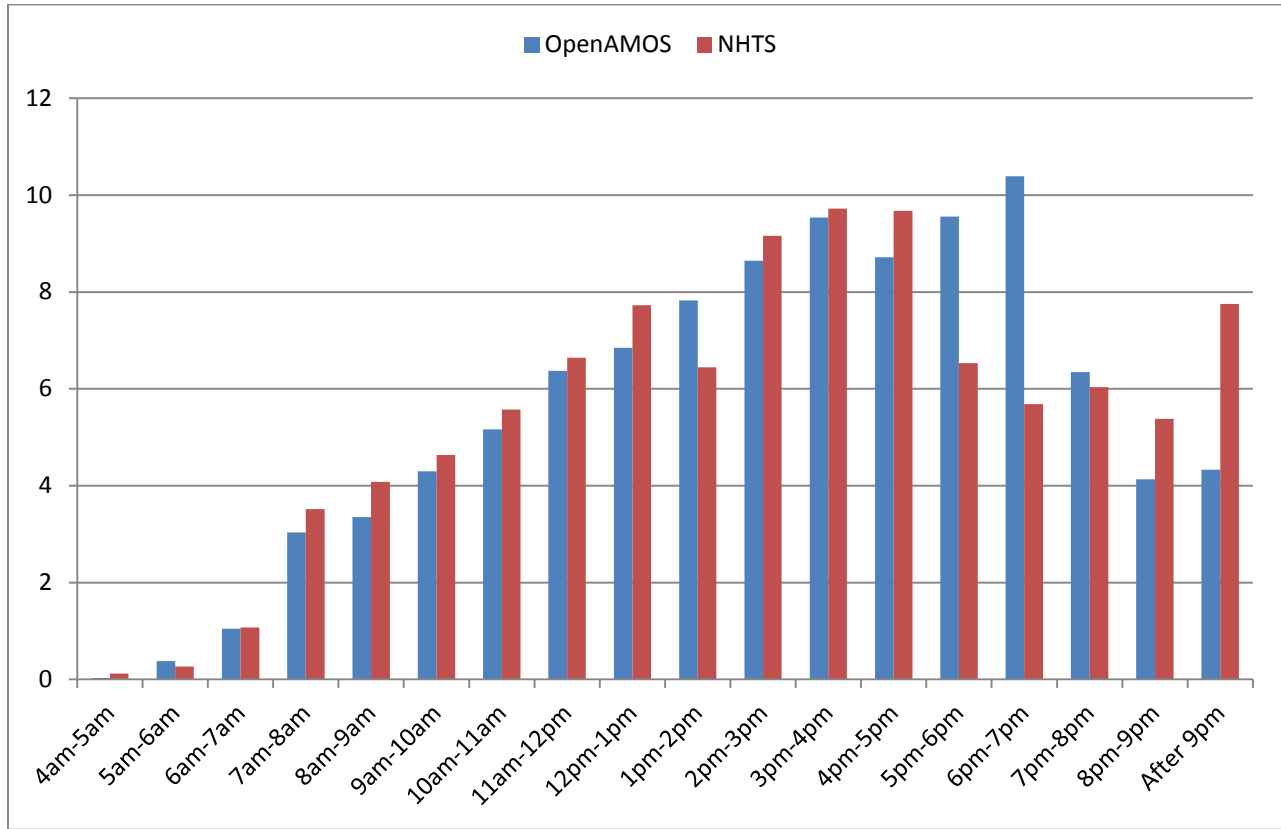
- *Trip start time distribution for pickup activities*



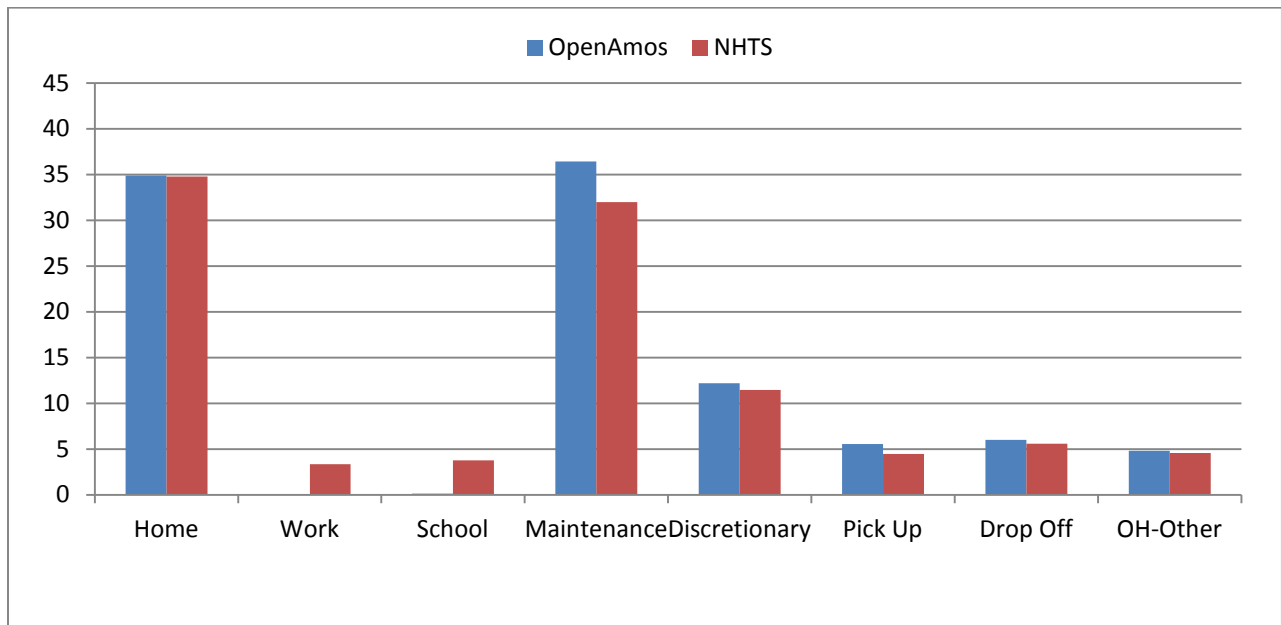
- *Trip start time distribution for drop-off activities*



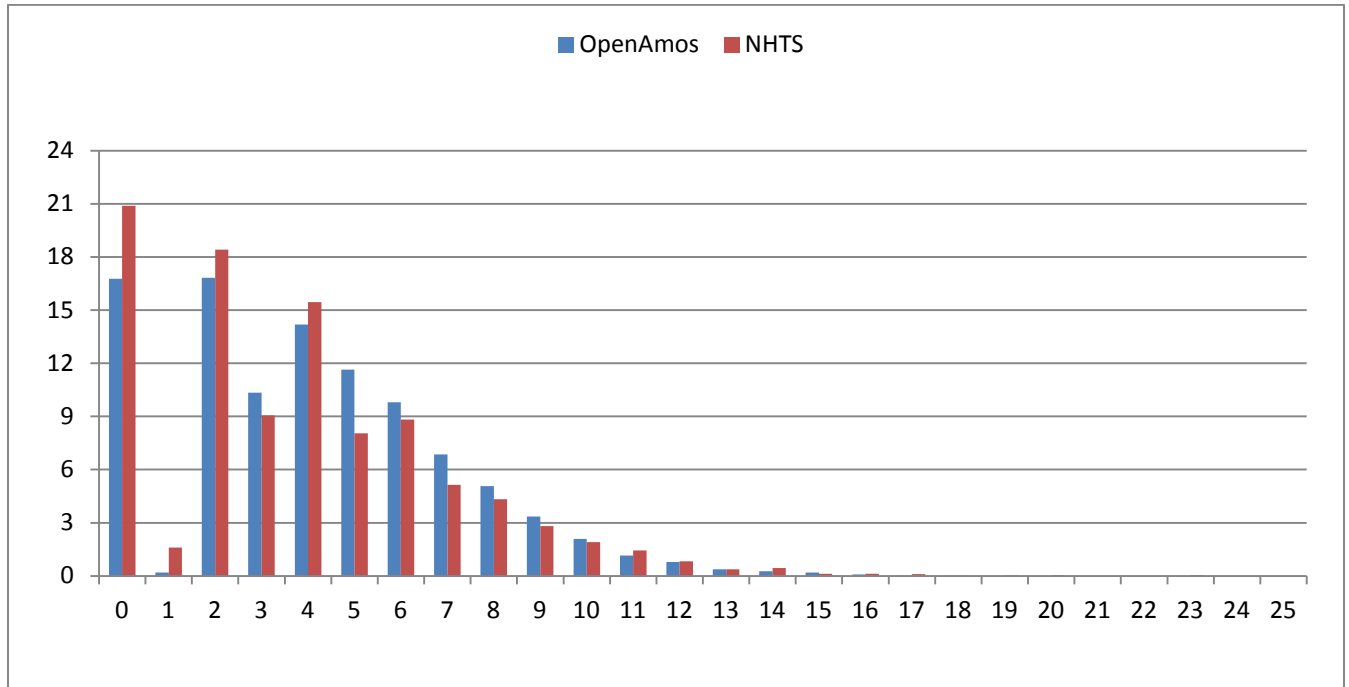
- *Trip start time distribution for in-home activities*



### 5. Trip purpose distribution



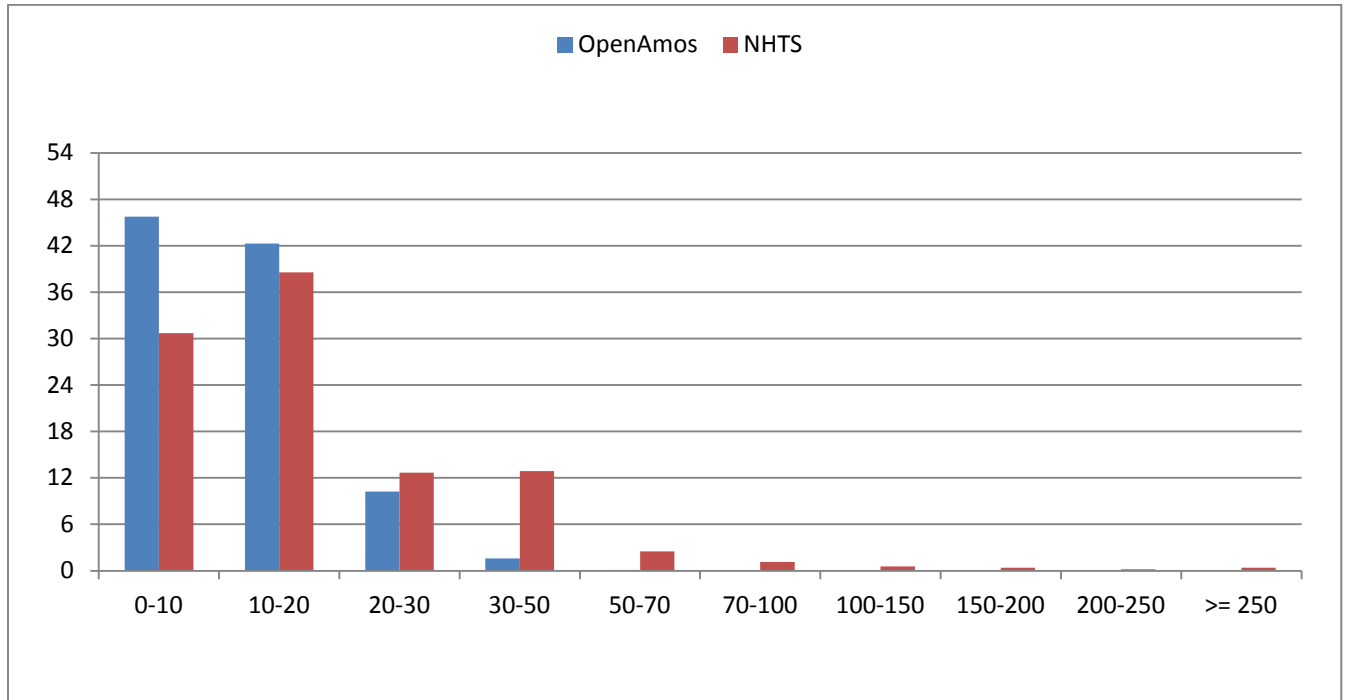
## 6. Trip rate distribution



## 7. Trip rate by purpose

	OpenAMOS	NHTS
Home	1.44	1.32
Work	0.00	0.13
School	0.00	0.14
Maintenance	1.51	1.22
Discretionary	0.50	0.44
Pick Up	0.23	0.17
Drop Off	0.25	0.21
OH-Other	0.20	0.17
<b>Total</b>	<b>4.14</b>	<b>3.80</b>

## 8. Trip duration distribution

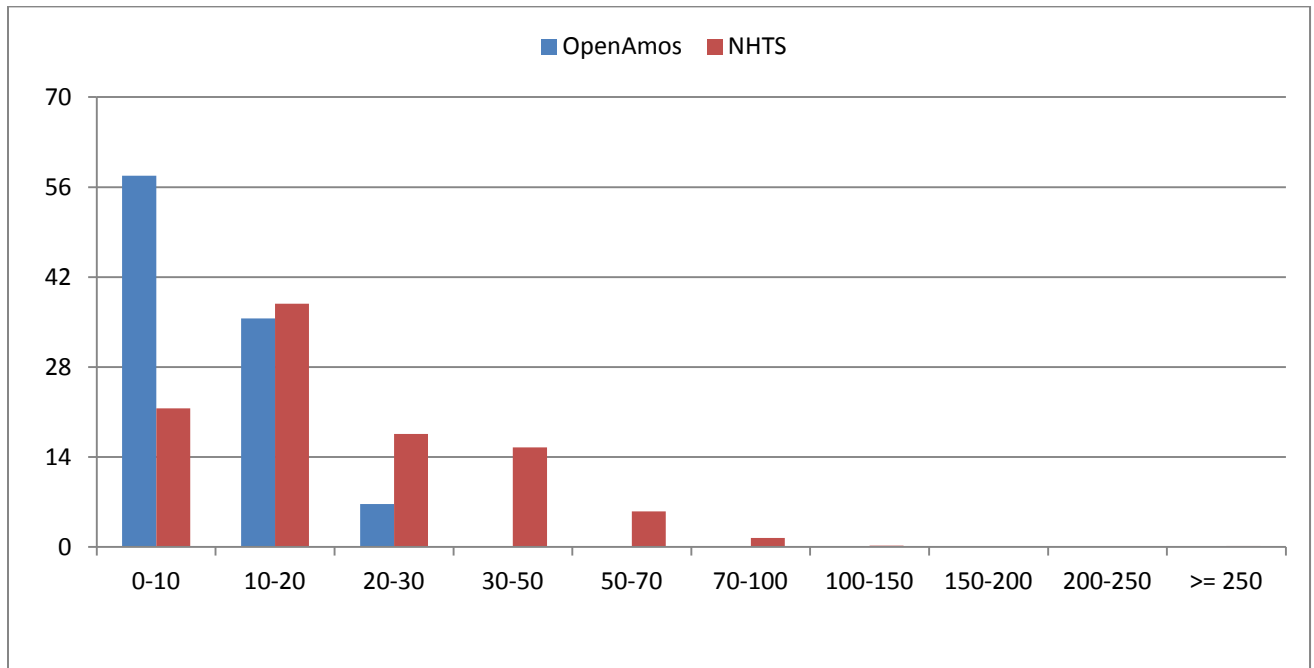


## 9. Trip duration distribution by purpose

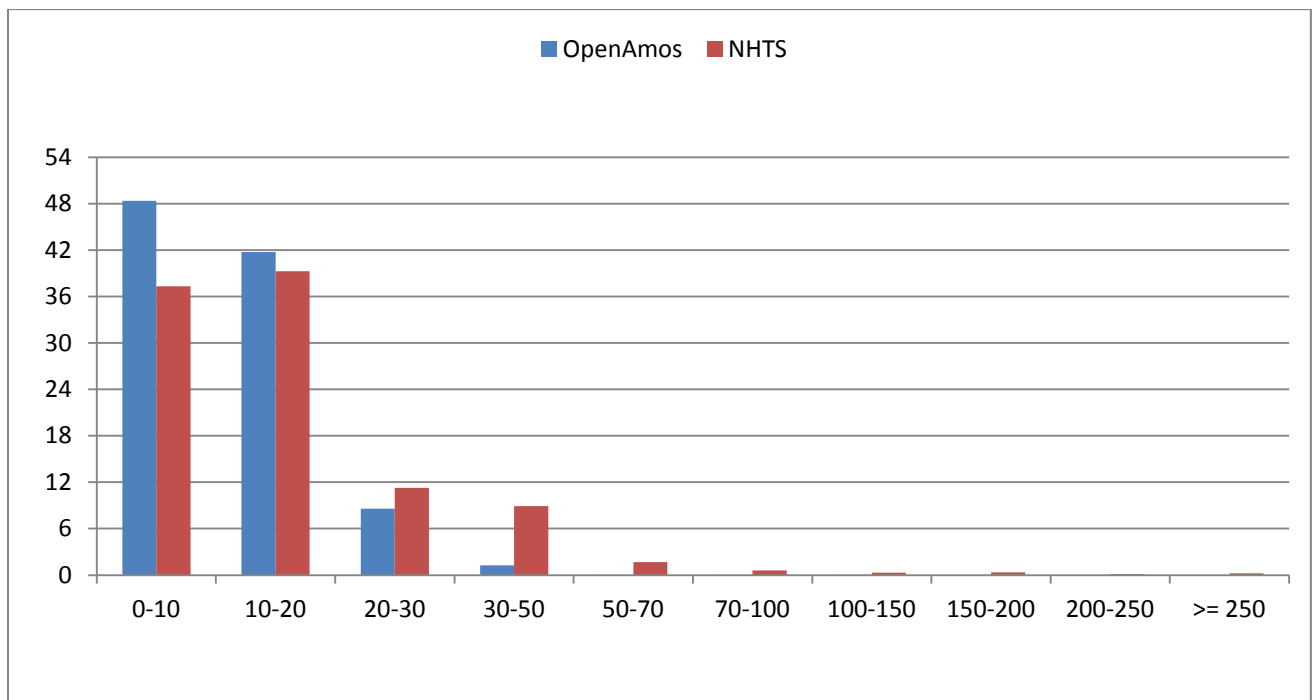
- *Average daily trip duration by purpose*

	Trip	
	OpenAMOS	NHTS
Home	16.81	24.92
Work	0.00	4.27
School	0.05	3.00
Maintenance	15.96	19.30
Discretionary	5.62	10.44
Pickup	2.72	2.48
Dropoff	2.62	3.24
<b>Total</b>	<b>43.78</b>	<b>67.66</b>

- *Trip duration distribution for school*

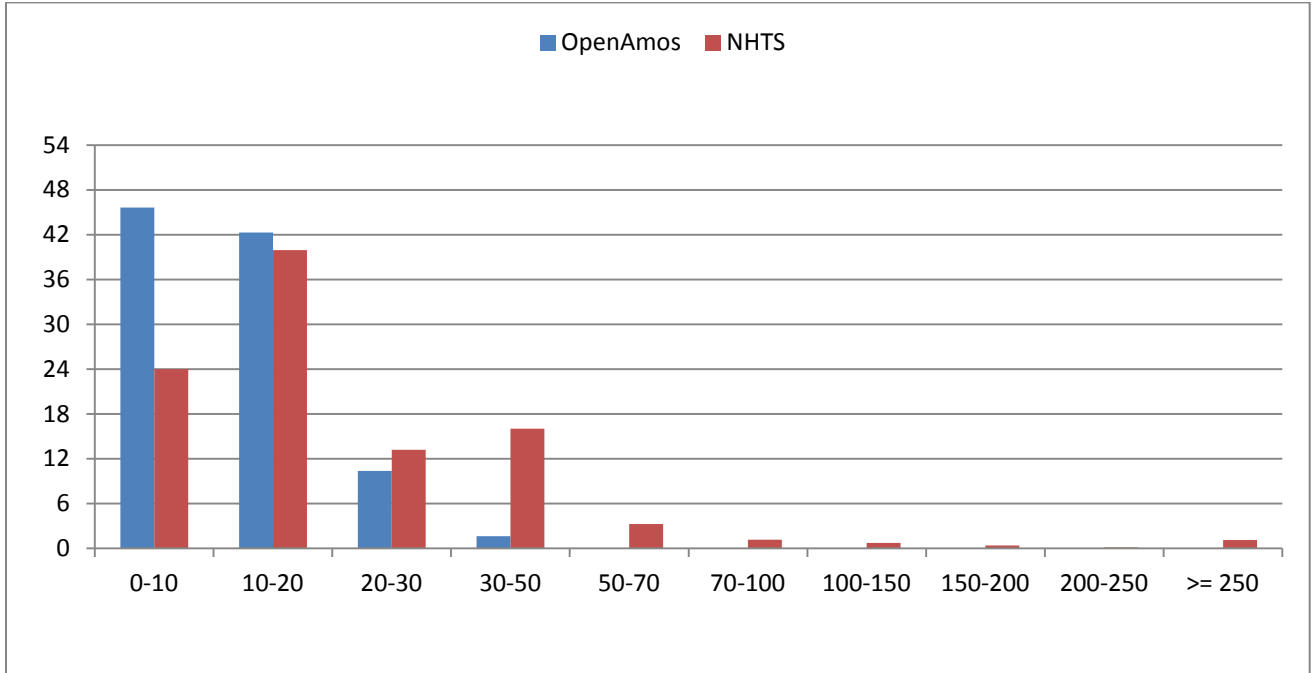


- *Trip duration distribution for maintenance activities*

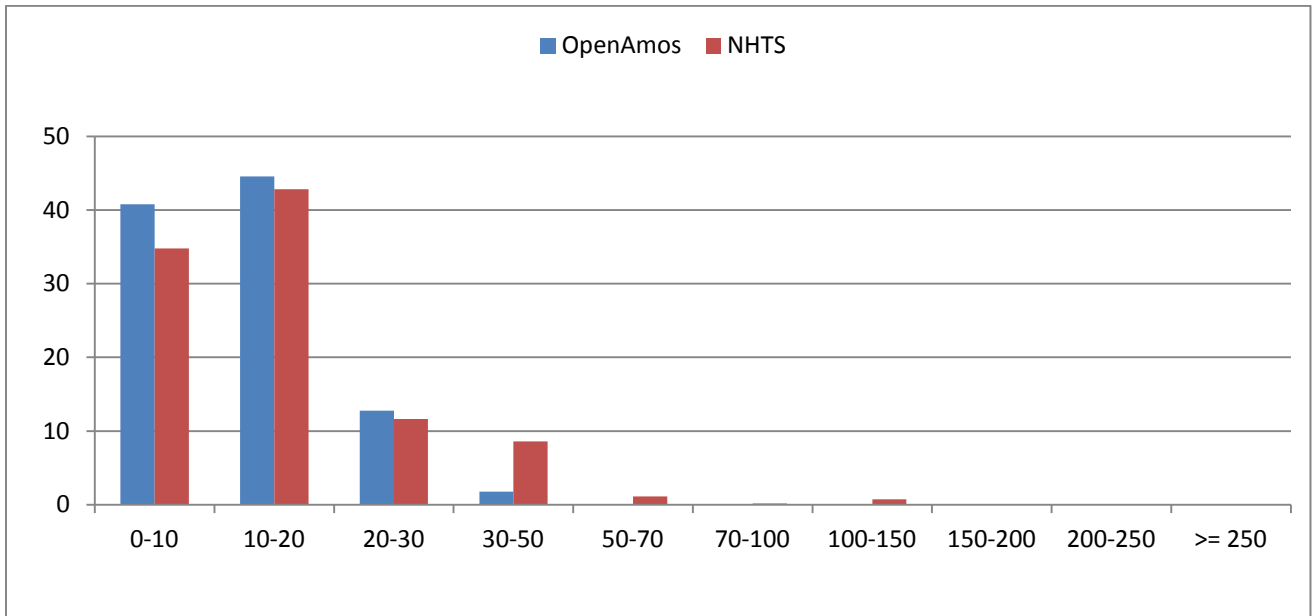




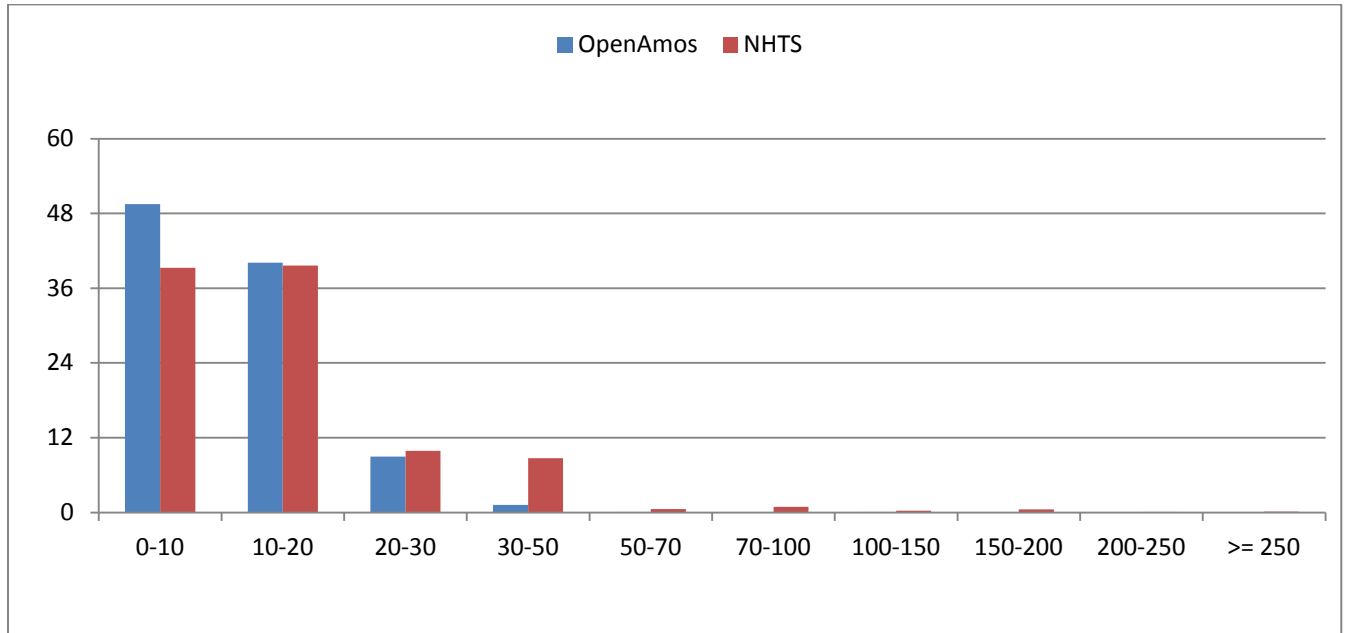
- *Trip duration distribution for discretionary activities*



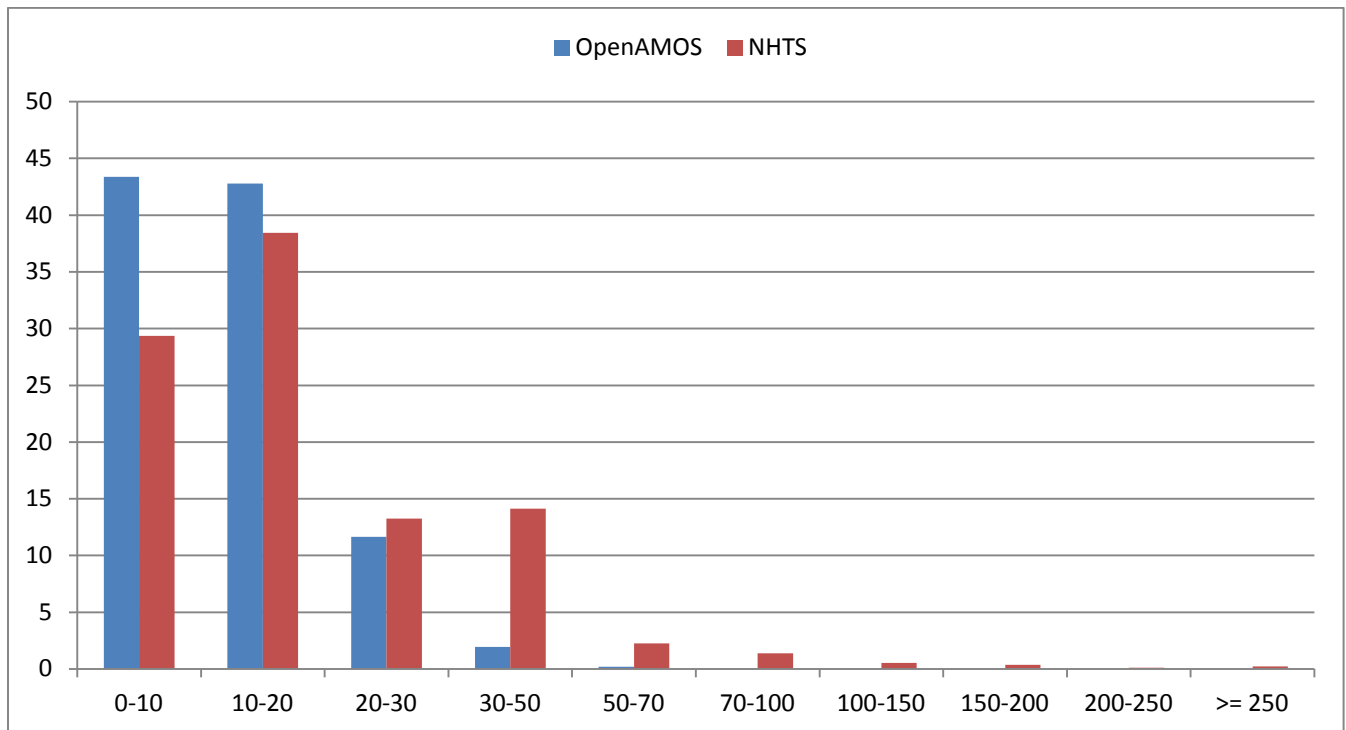
- *Trip duration distribution for pickup activities*



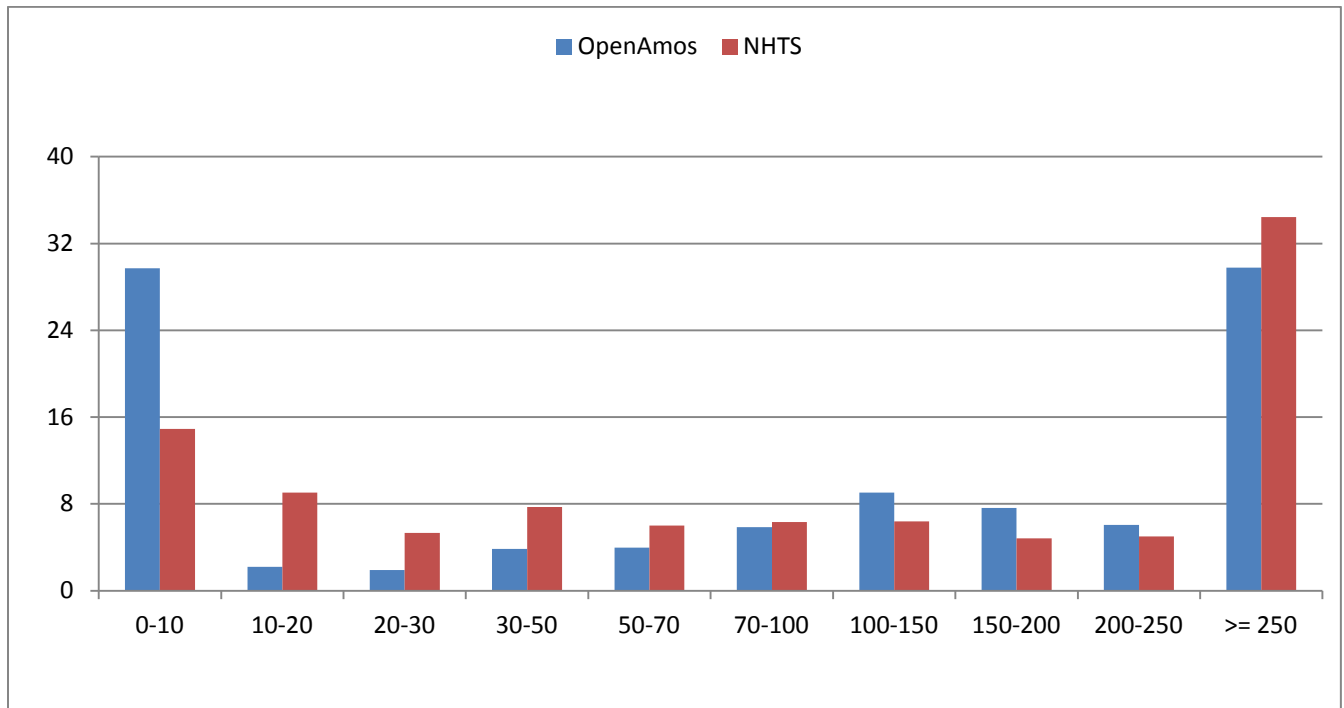
- *Trip duration distribution for drop-off activities*



- *Trip duration distribution for in-home activities*



## 10. Activity duration distribution

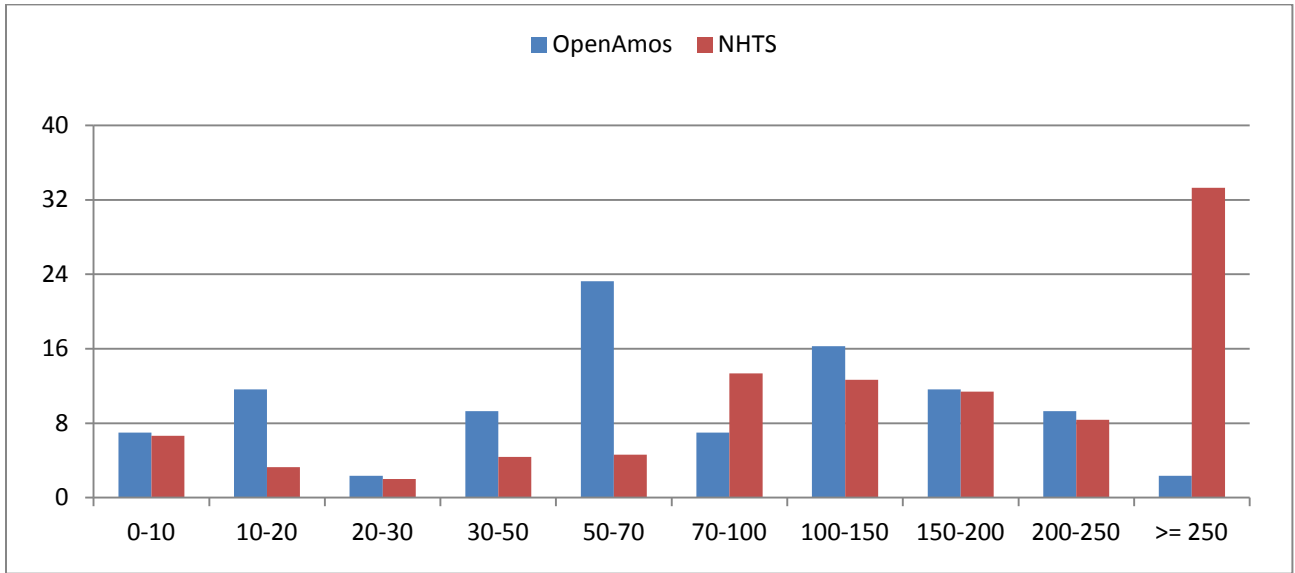


## 11. Activity duration distribution by purpose

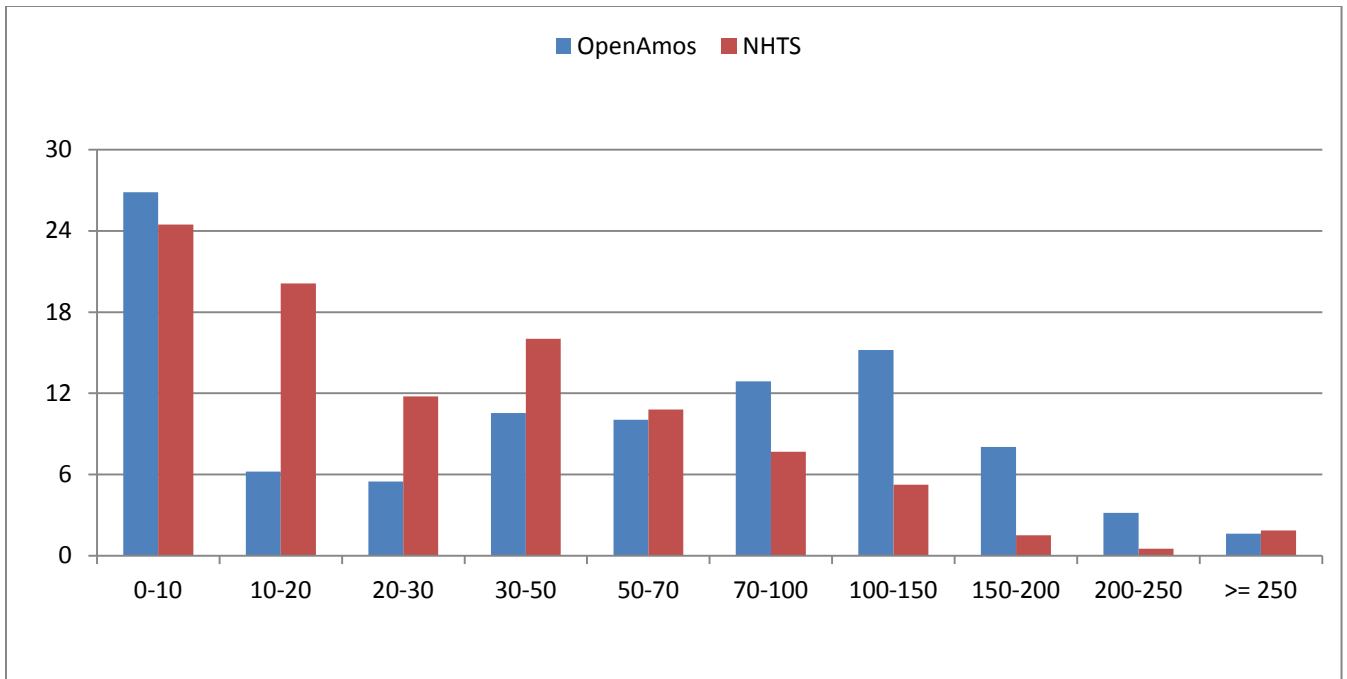
- *Average daily activity duration by purpose*

	Activity	
	OpenAMOS	NHTS
Home	1223.21	843.51
Work	0.00	20.77
School	0.45	30.03
Maintenance	92.45	52.79
Discretionary	46.73	57.74
Pickup	1.57	3.24
Dropoff	5.20	7.22
<b>Total</b>	<b>1369.61</b>	<b>1015.31</b>

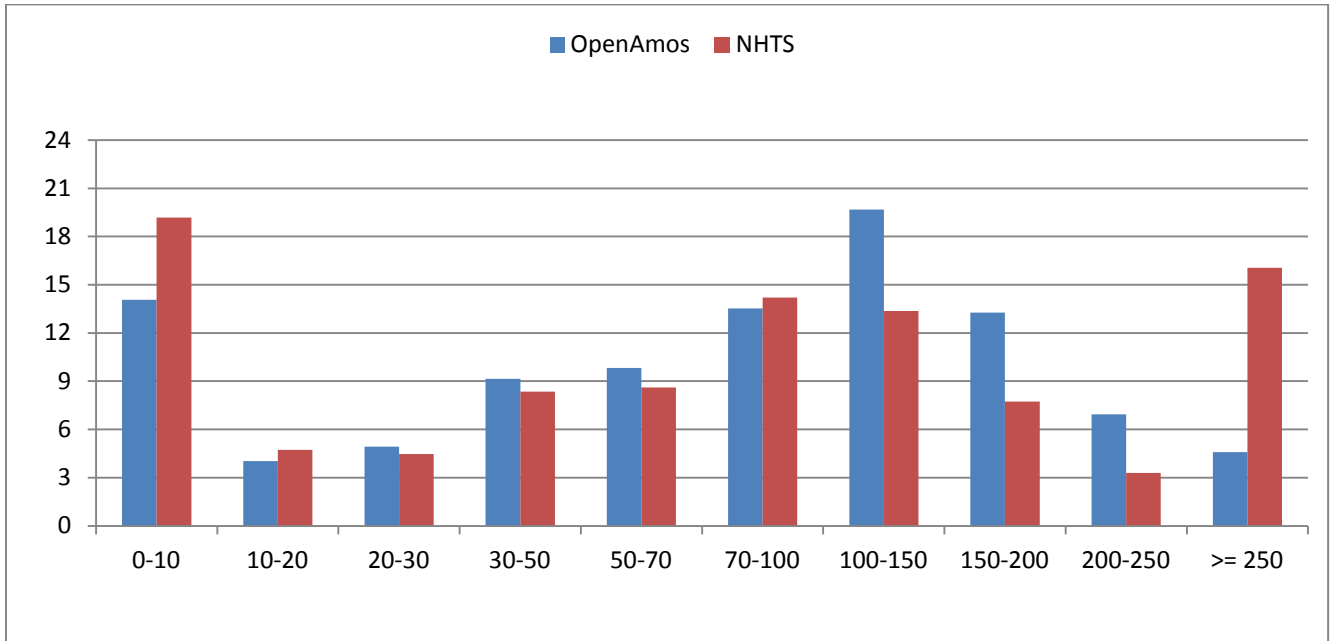
- *Activity duration distribution for school*



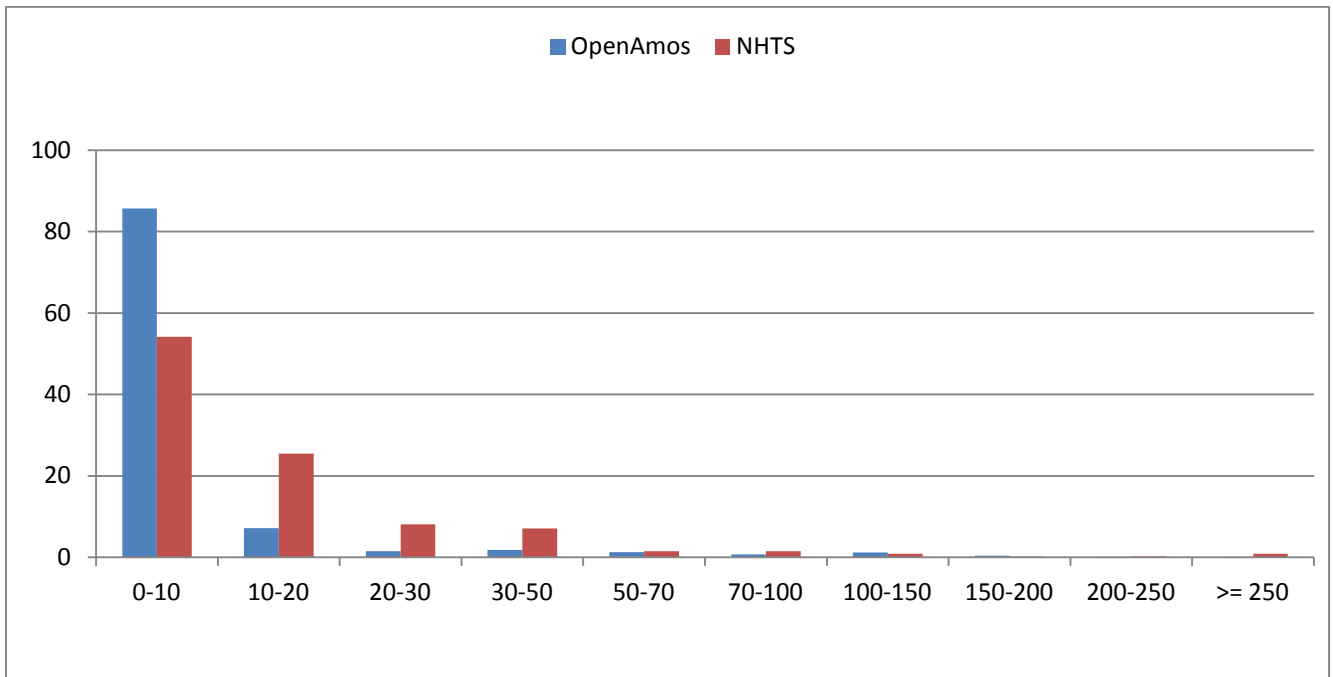
- *Activity duration distribution for maintenance activities*



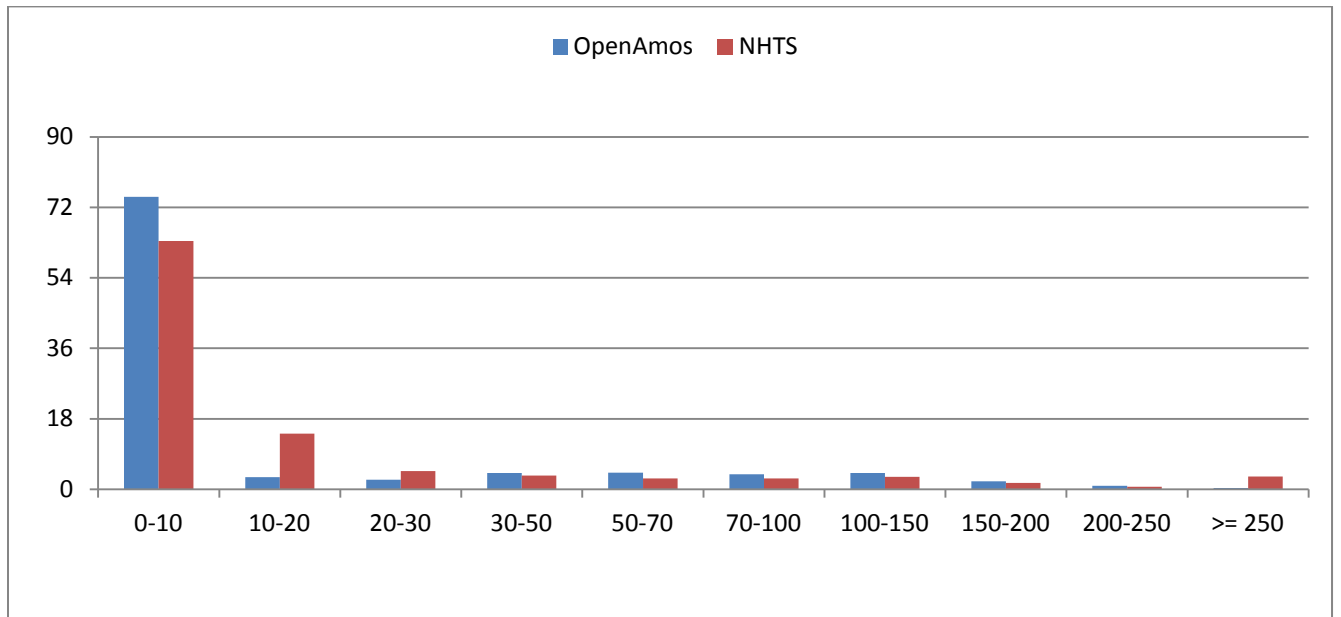
- *Activity duration distribution for discretionary activities*



- *Activity duration distribution for pickup activities*



- Activity duration distribution for drop-off activities



- Activity duration distribution for in-home activities

