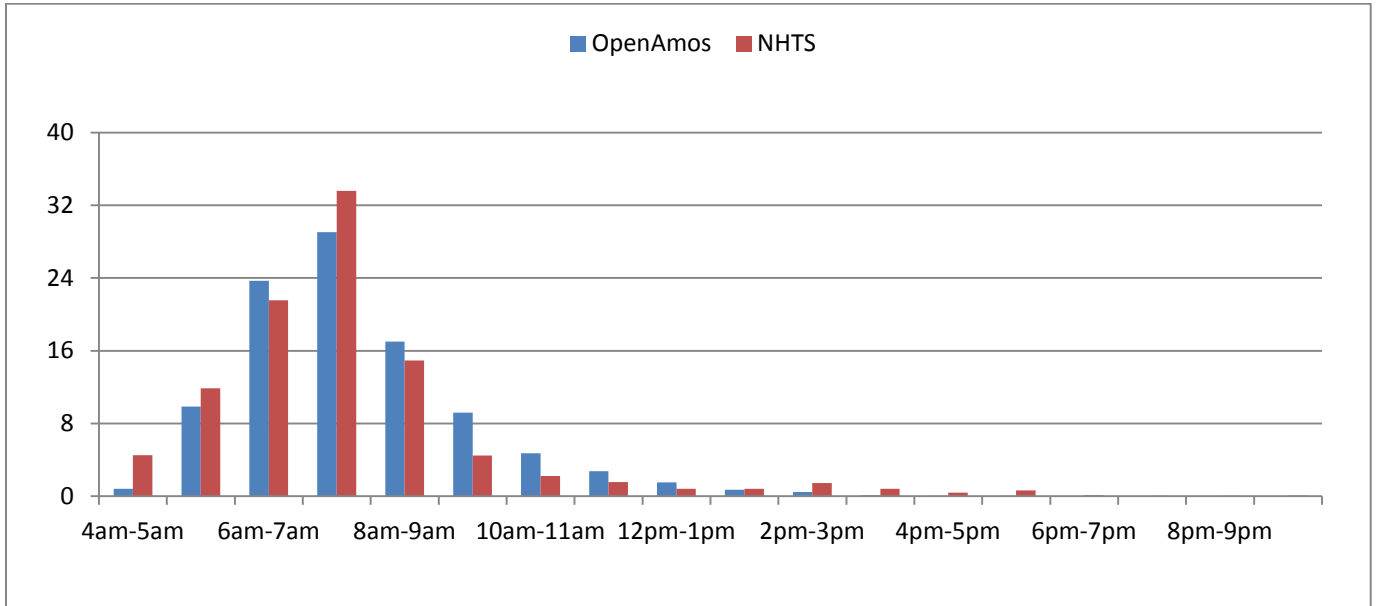
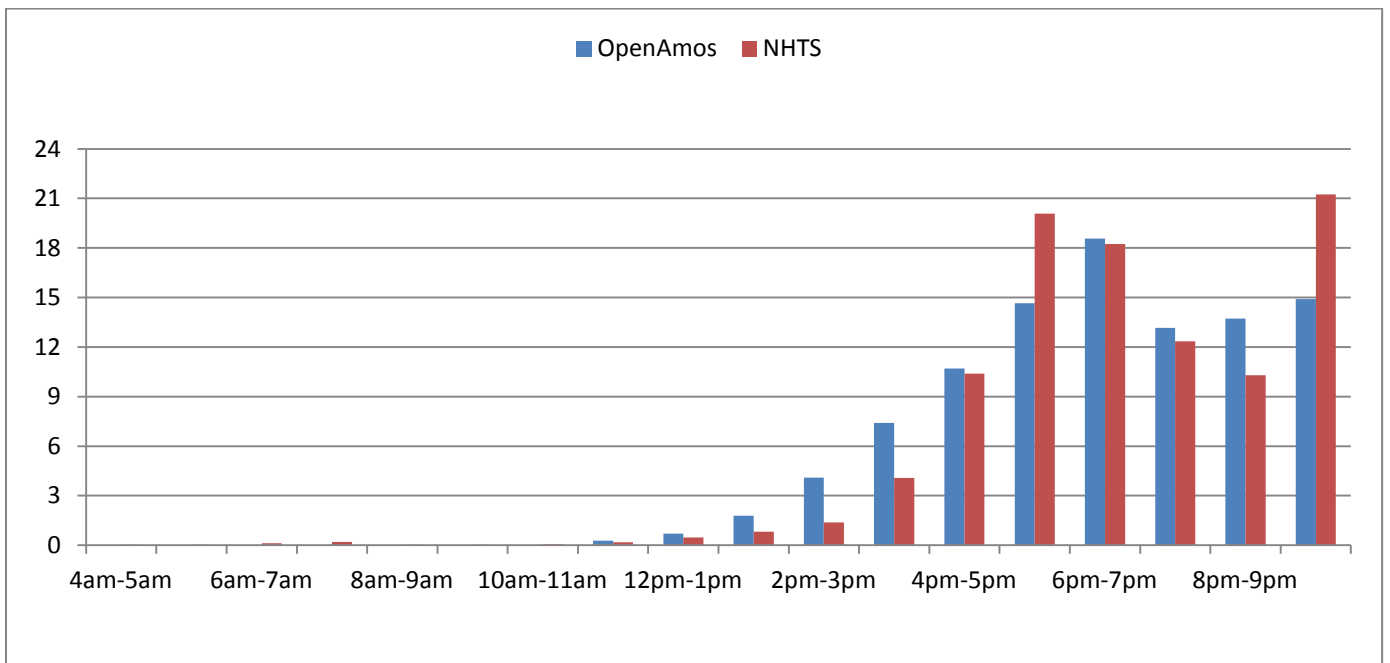


ADULT WORKER

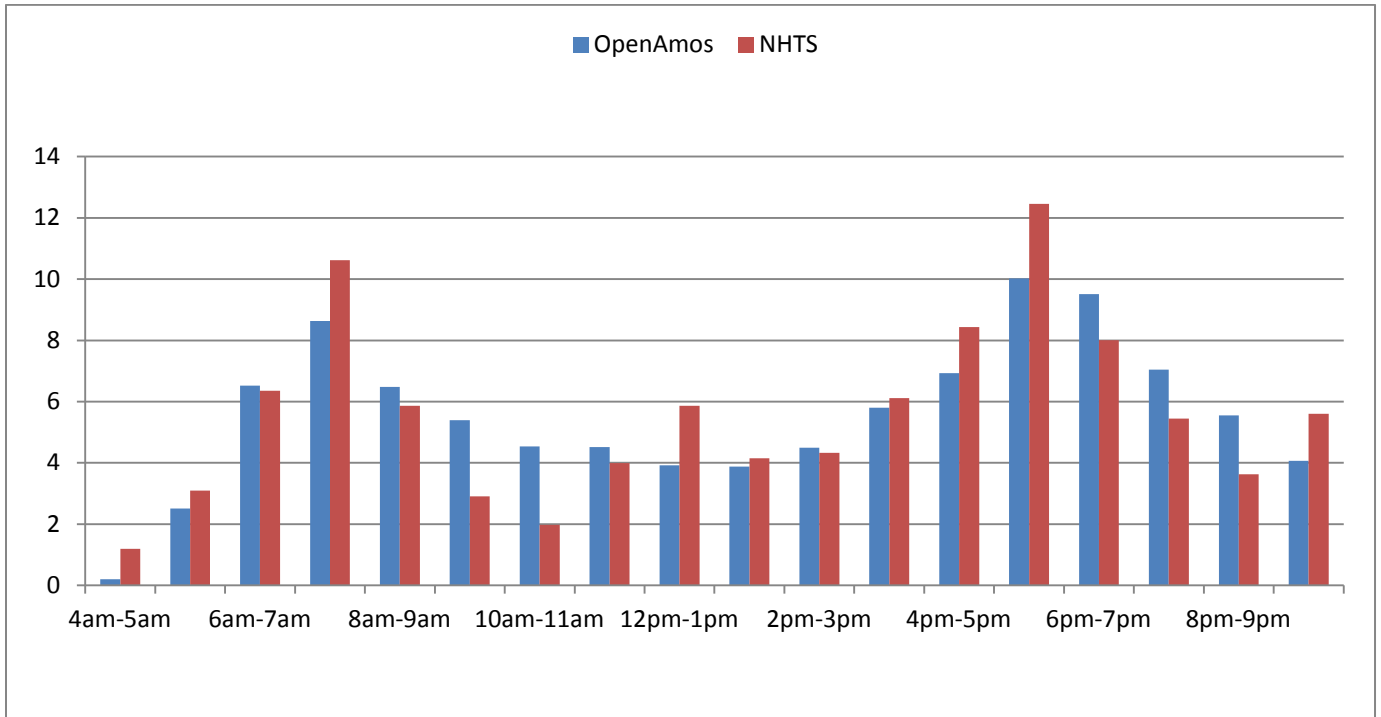
1. Earliest start of day



2. Latest end of day

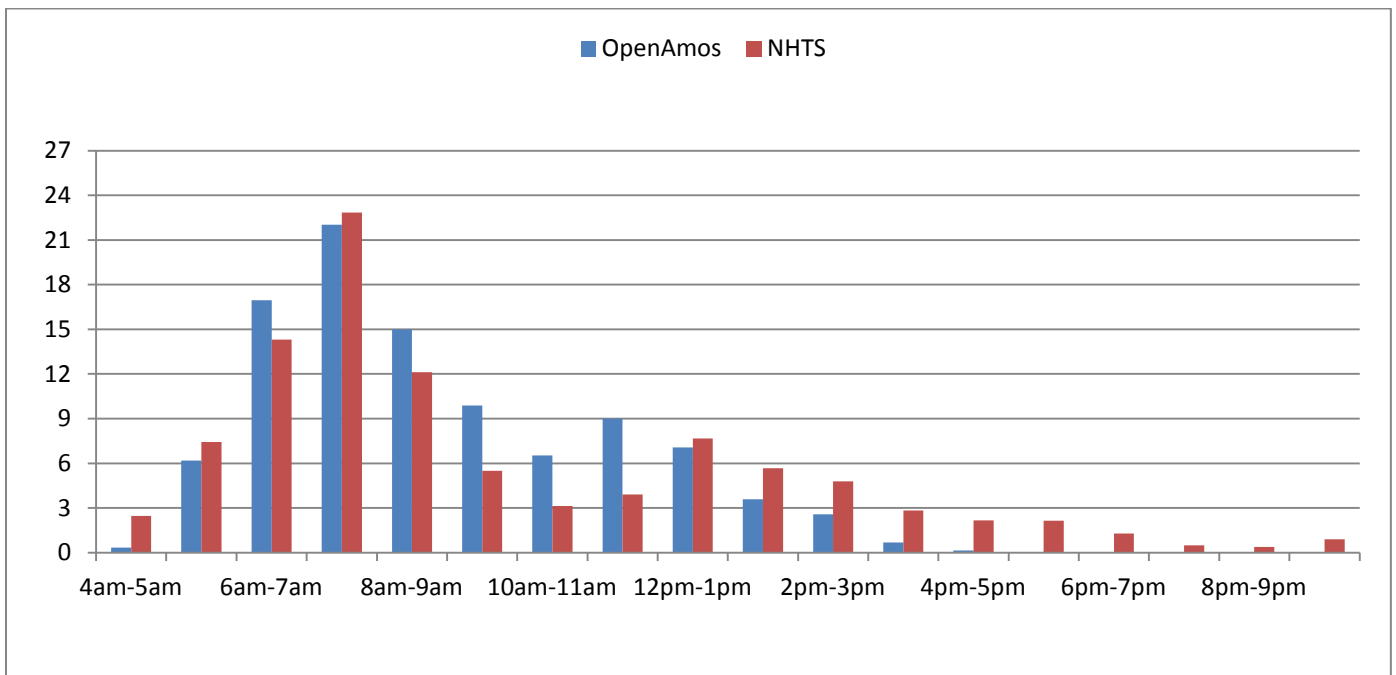


3. Trip start time distribution

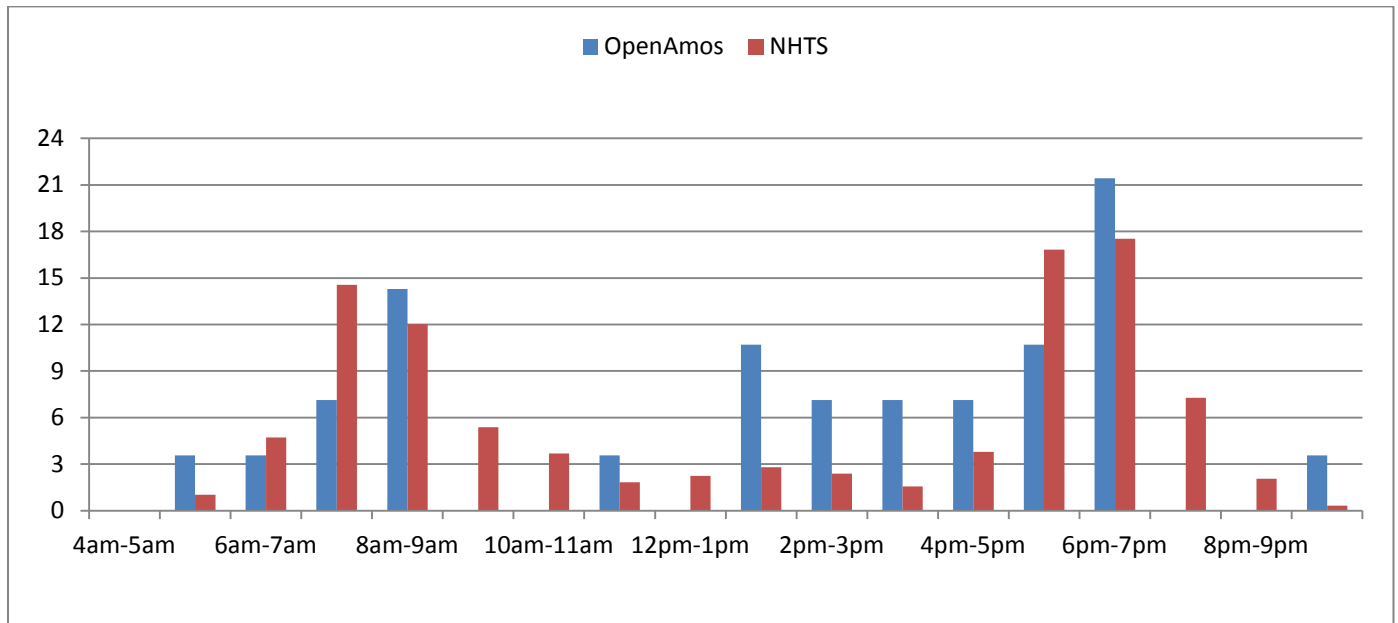


4. Trip start time distribution by purpose

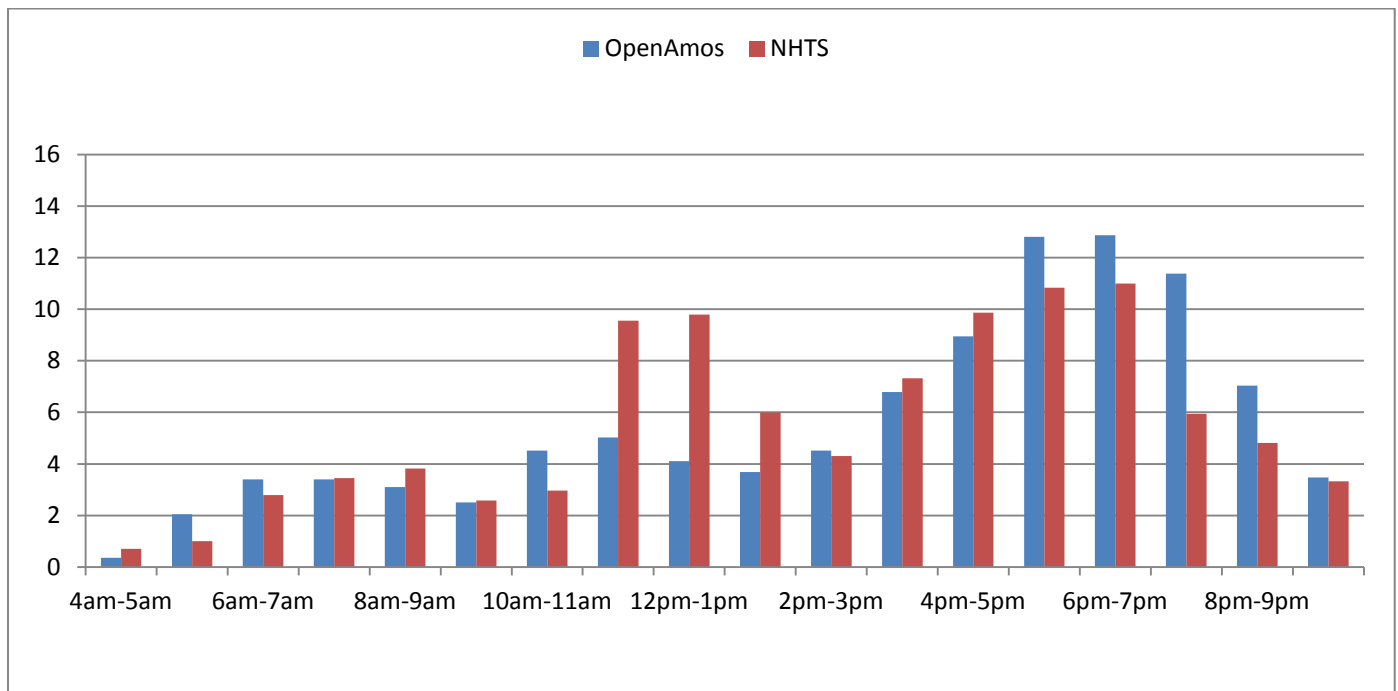
- *Trip start time distribution for work*



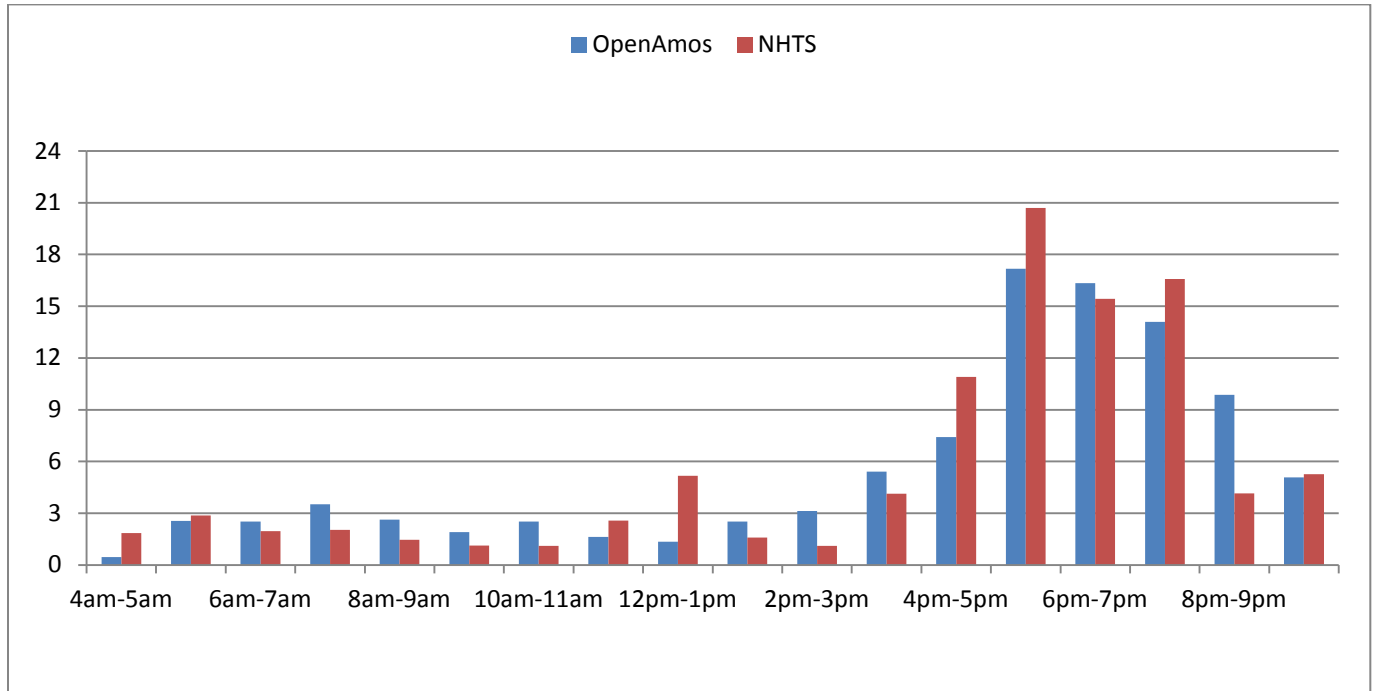
- *Trip start time distribution for school*



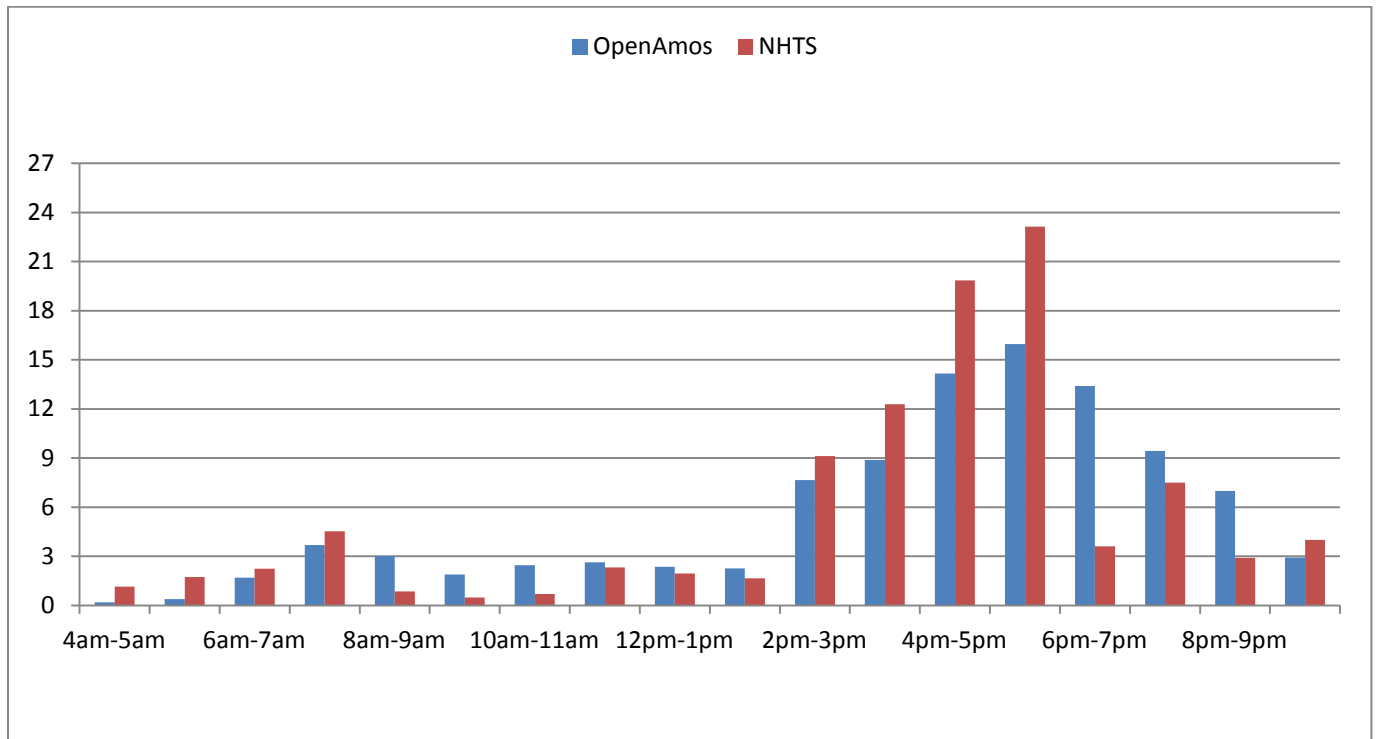
- *Trip start time distribution for maintenance activities*



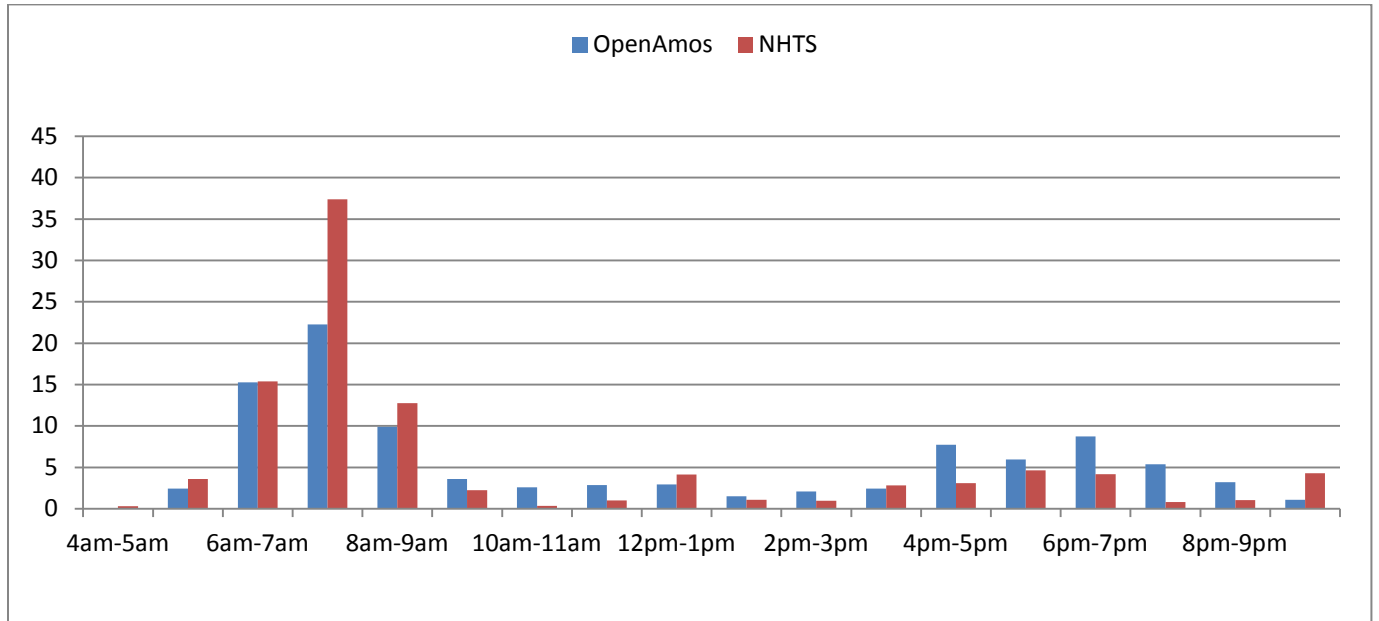
- *Trip start time distribution for discretionary activities*



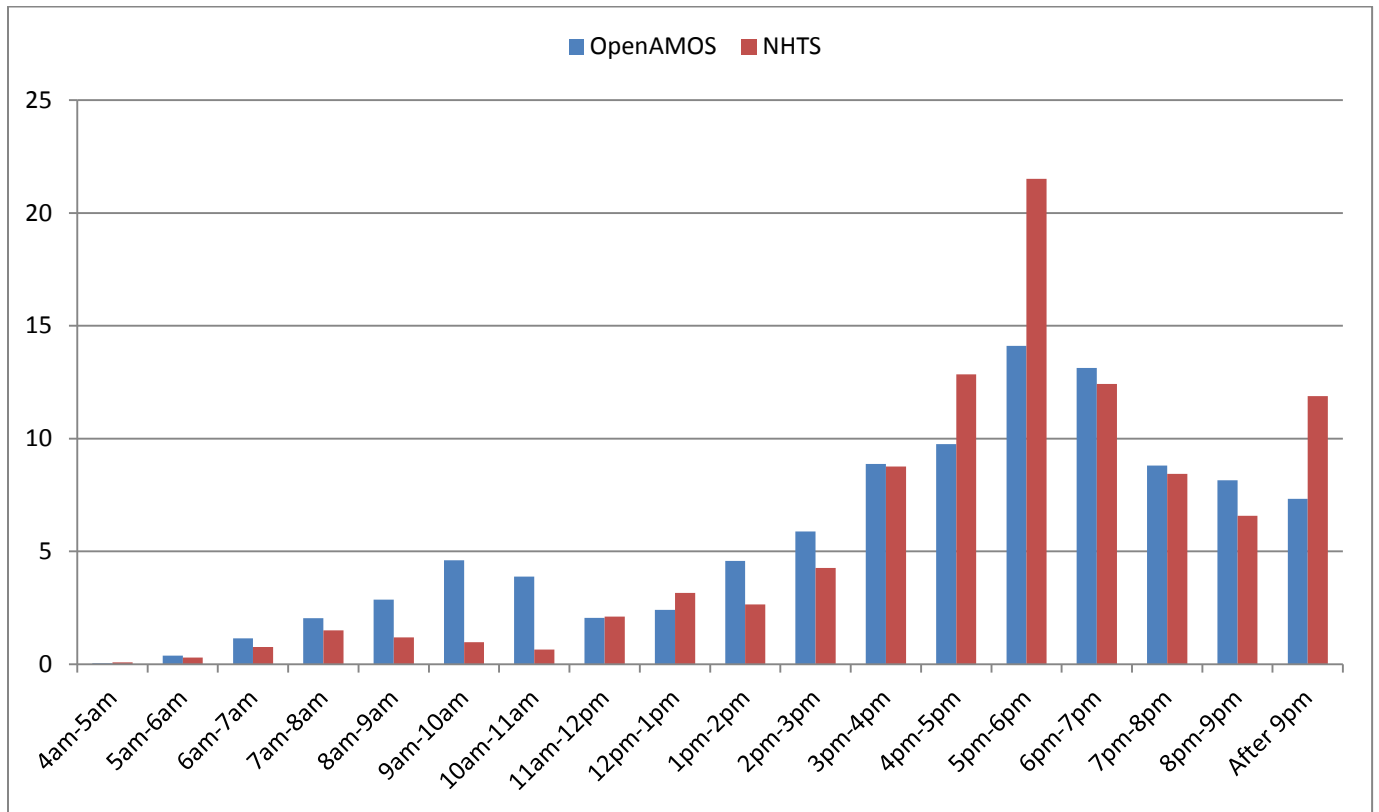
- *Trip start time distribution for pickup activities*



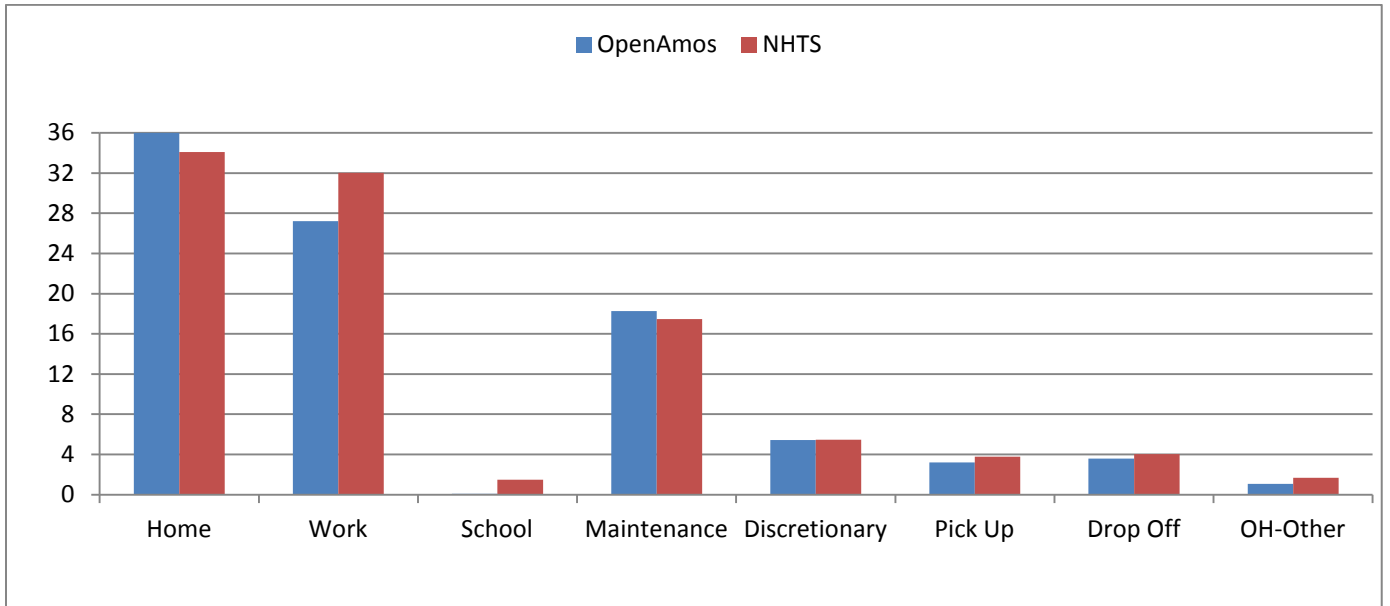
- *Trip start time distribution for drop-off activities*



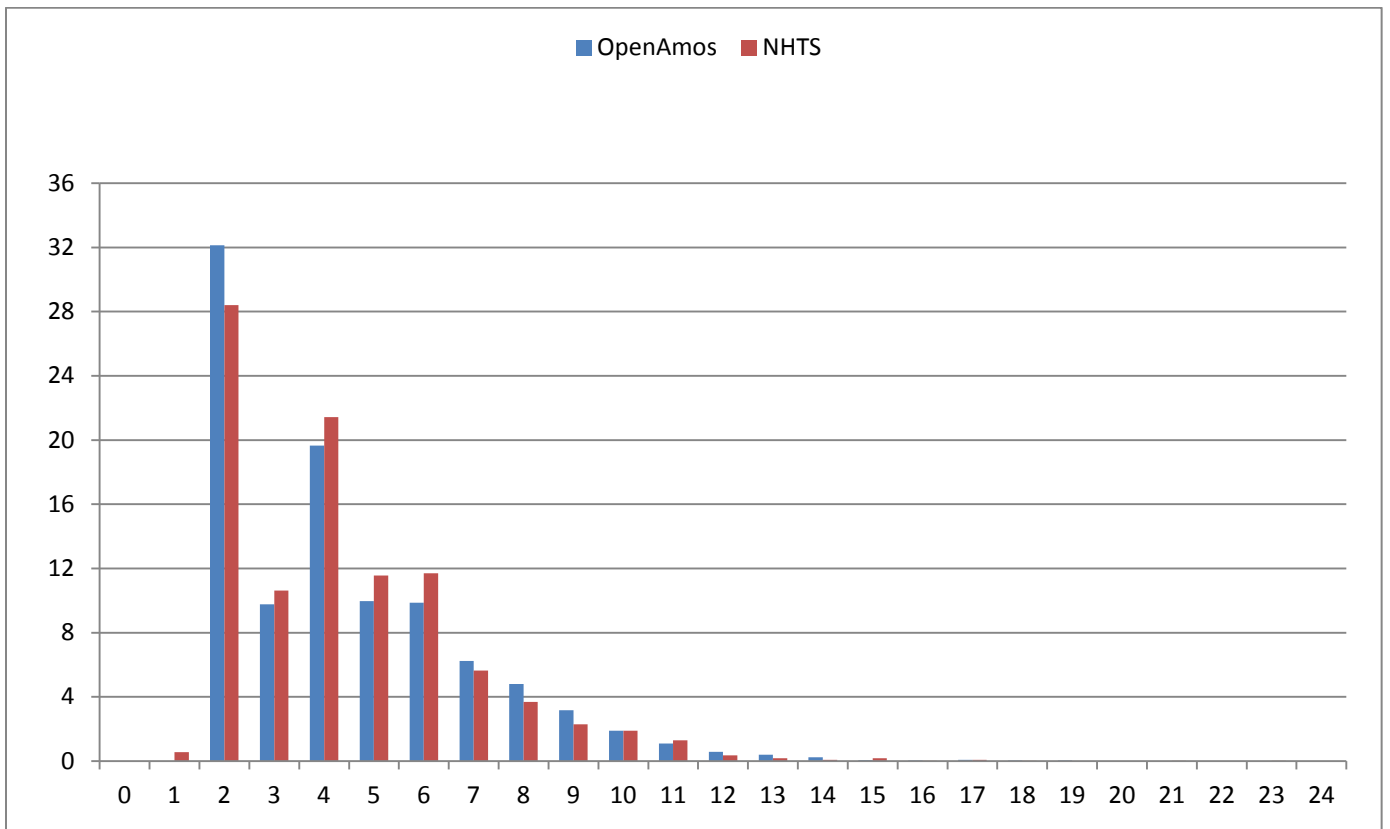
- *Trip start time distribution for in-home activities*



5. Trip purpose distribution



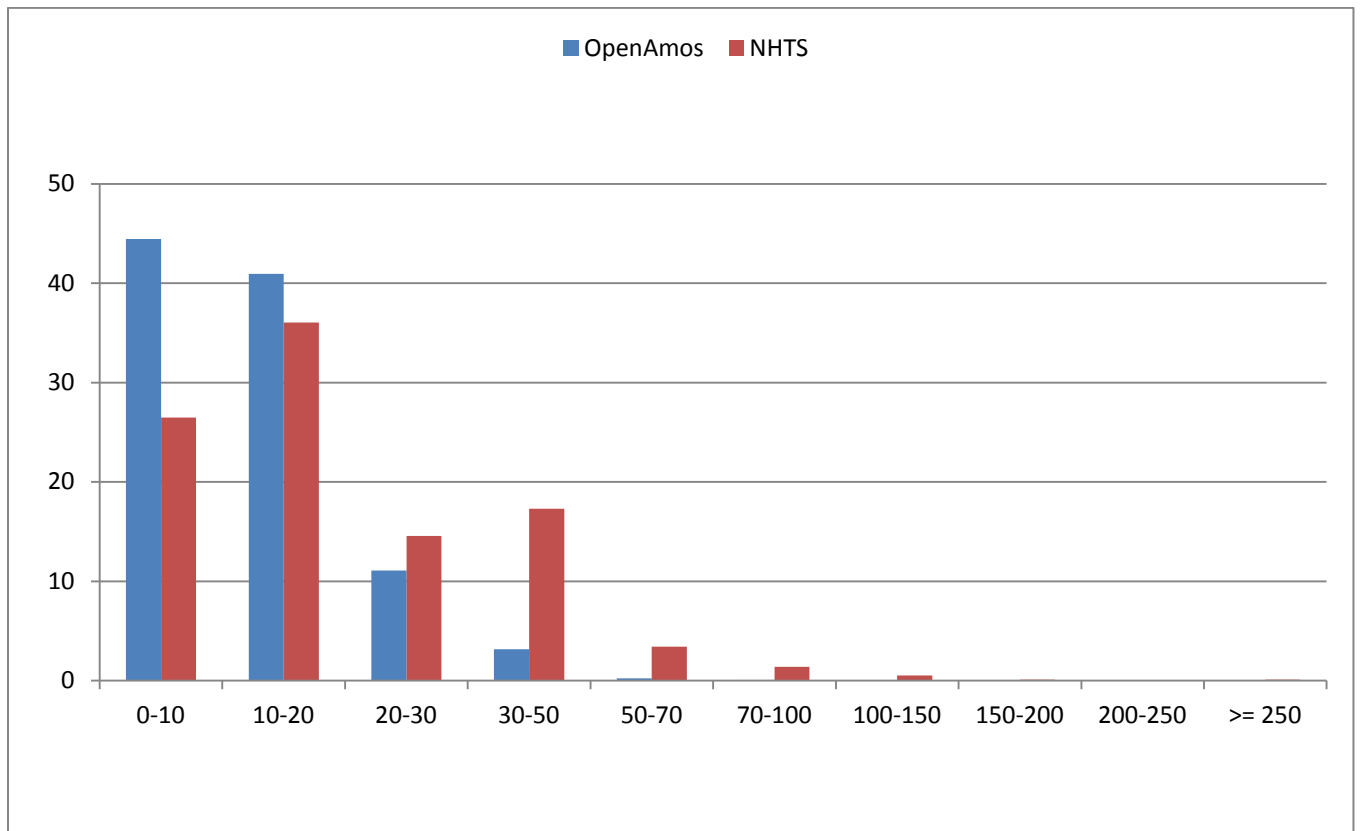
6. Trip rate distribution



7. Trip rate by purpose

	OpenAMOS	NHTS
Home	1.82	1.49
Work	1.20	1.40
School	0.00	0.06
Maintenance	0.81	0.77
Discretionary	0.24	0.24
Anchor	0.00	0.00
Pick Up	0.14	0.17
Drop Off	0.16	0.18
OH-Other	0.05	0.07
Total	4.42	4.38

8. Trip duration distribution

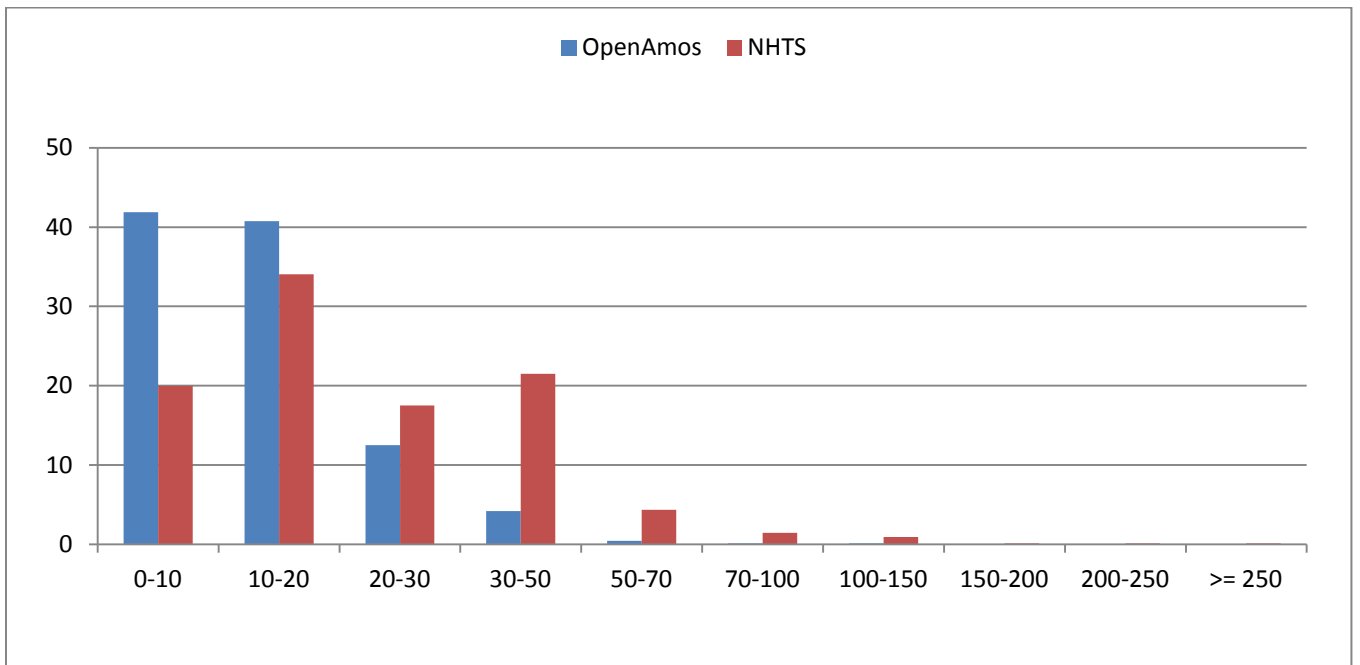


9. Trip duration distribution by purpose

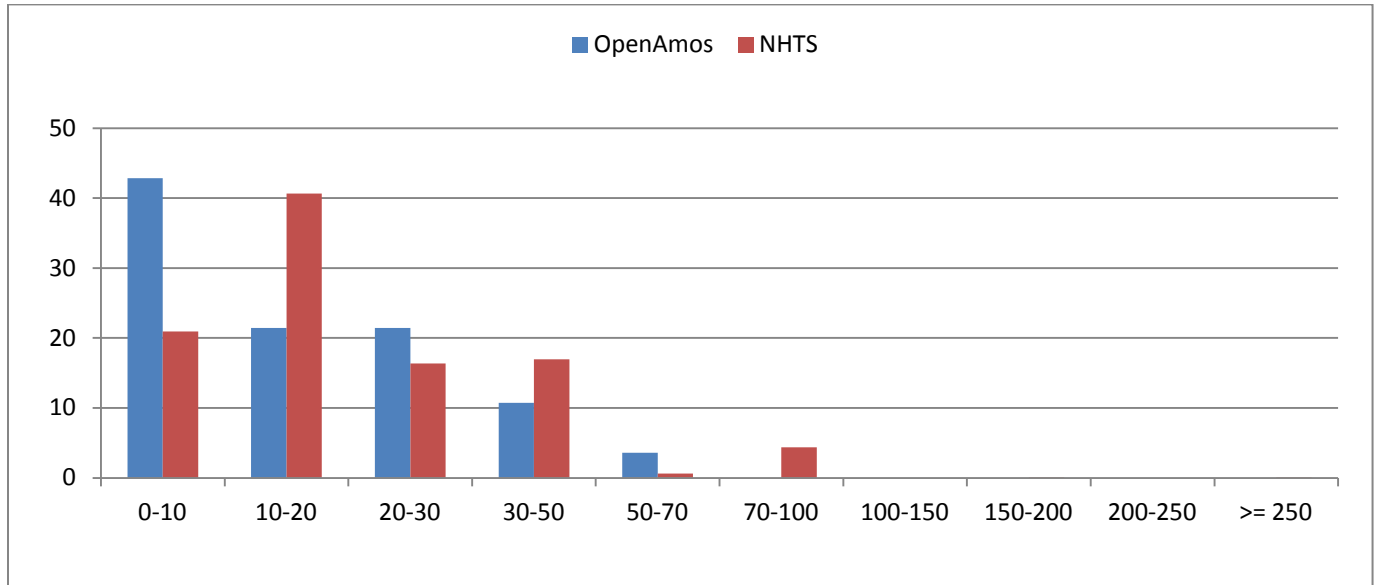
- *Average daily trip duration by purpose*

	Trip	
	OpenAMOS	NHTS
Home	22.01	33.05
Work	15.23	31.59
School	0.06	1.30
Maintenance	8.61	10.10
Discretionary	2.57	4.17
Pickup	1.77	2.34
Dropoff	1.60	2.24
Total	51.85	84.79

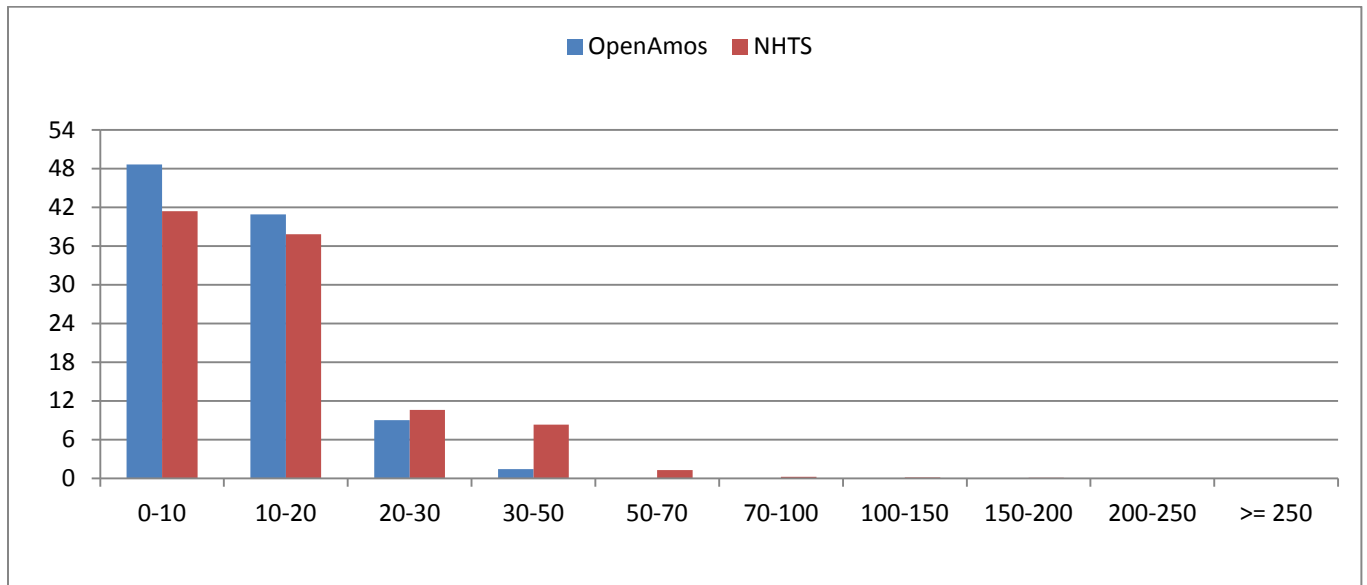
- *Trip duration distribution for work*



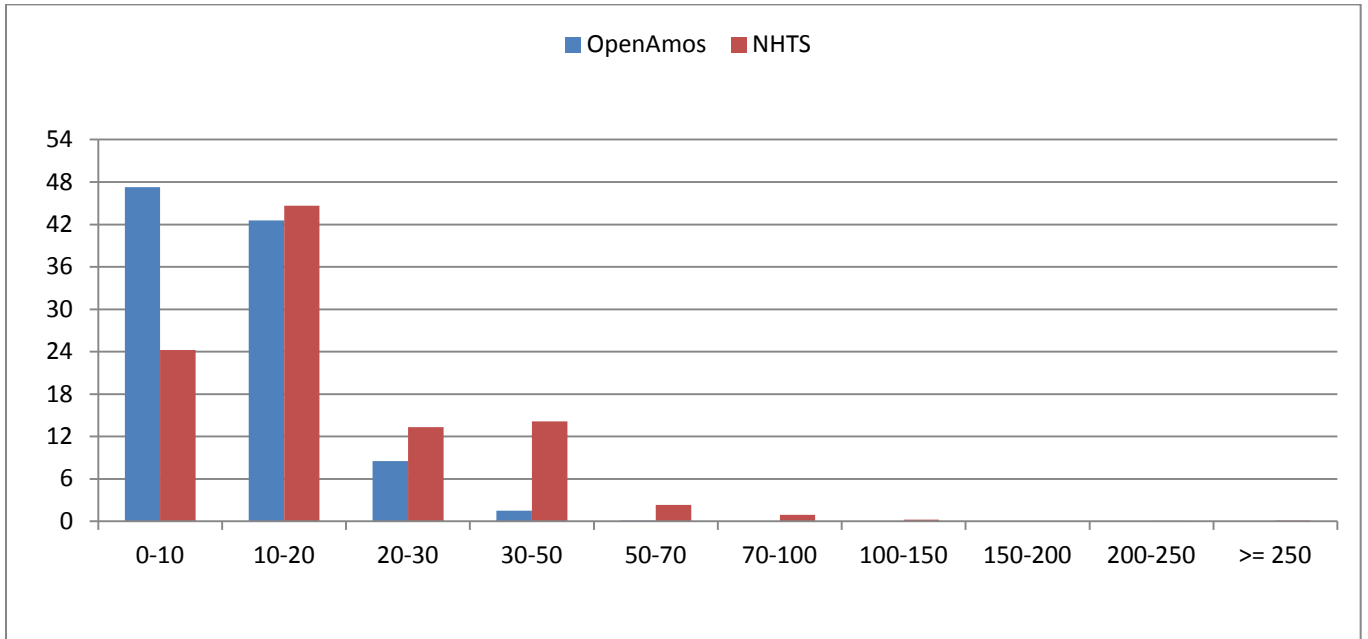
- *Trip duration distribution for school*



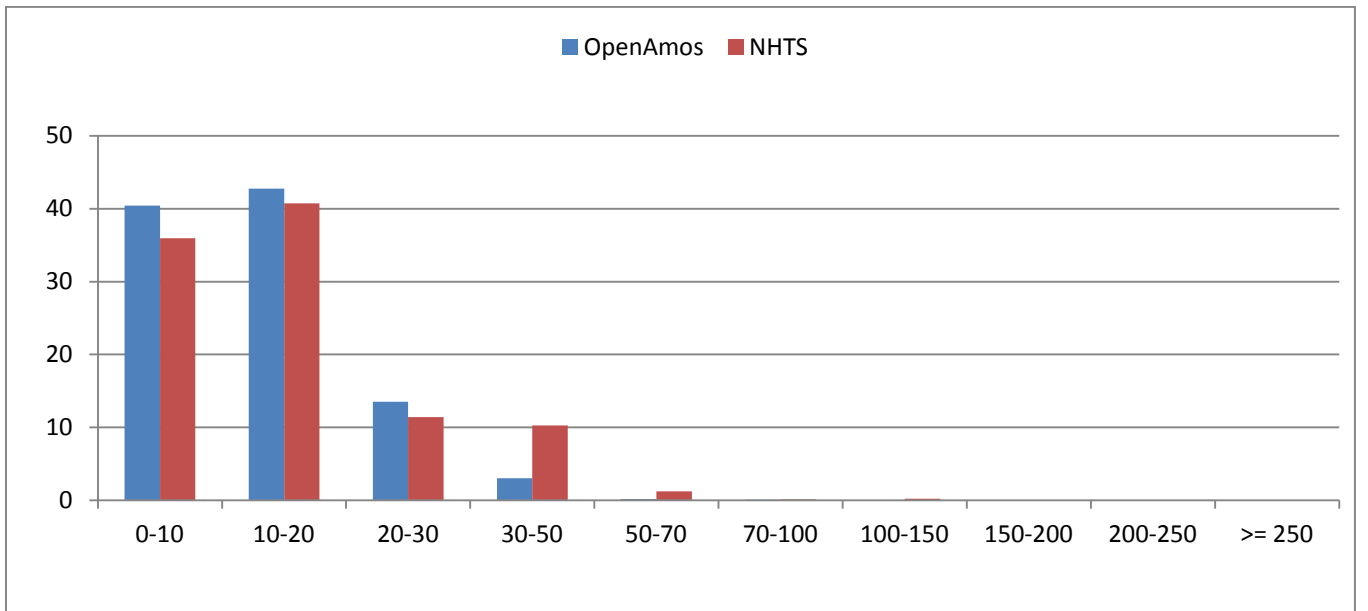
- *Trip duration distribution for maintenance activities*



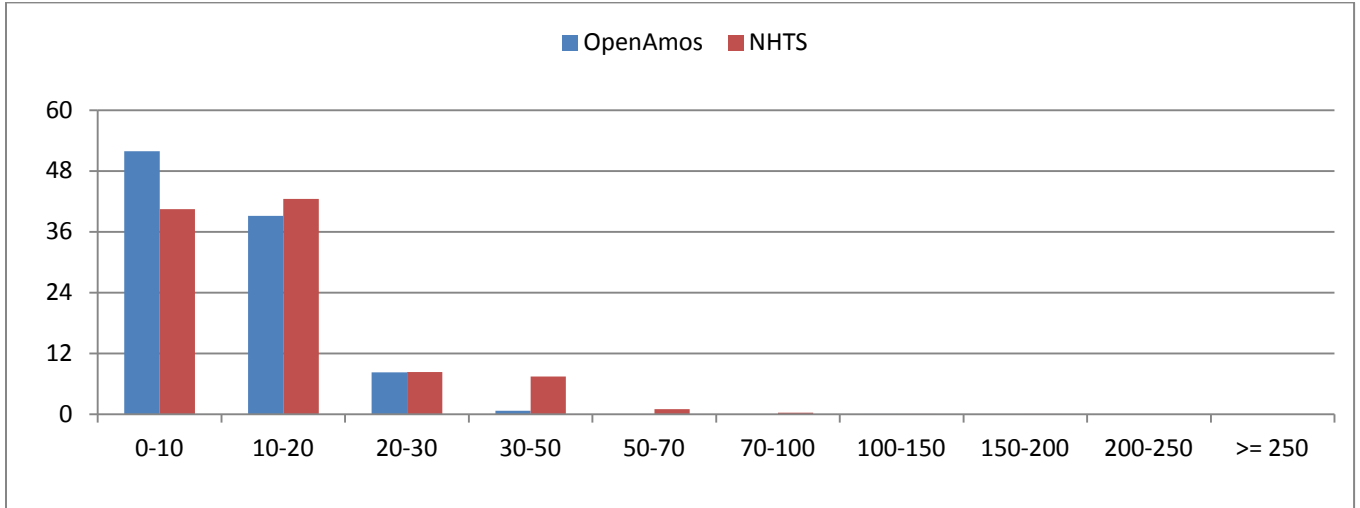
- *Trip duration distribution for discretionary activities*



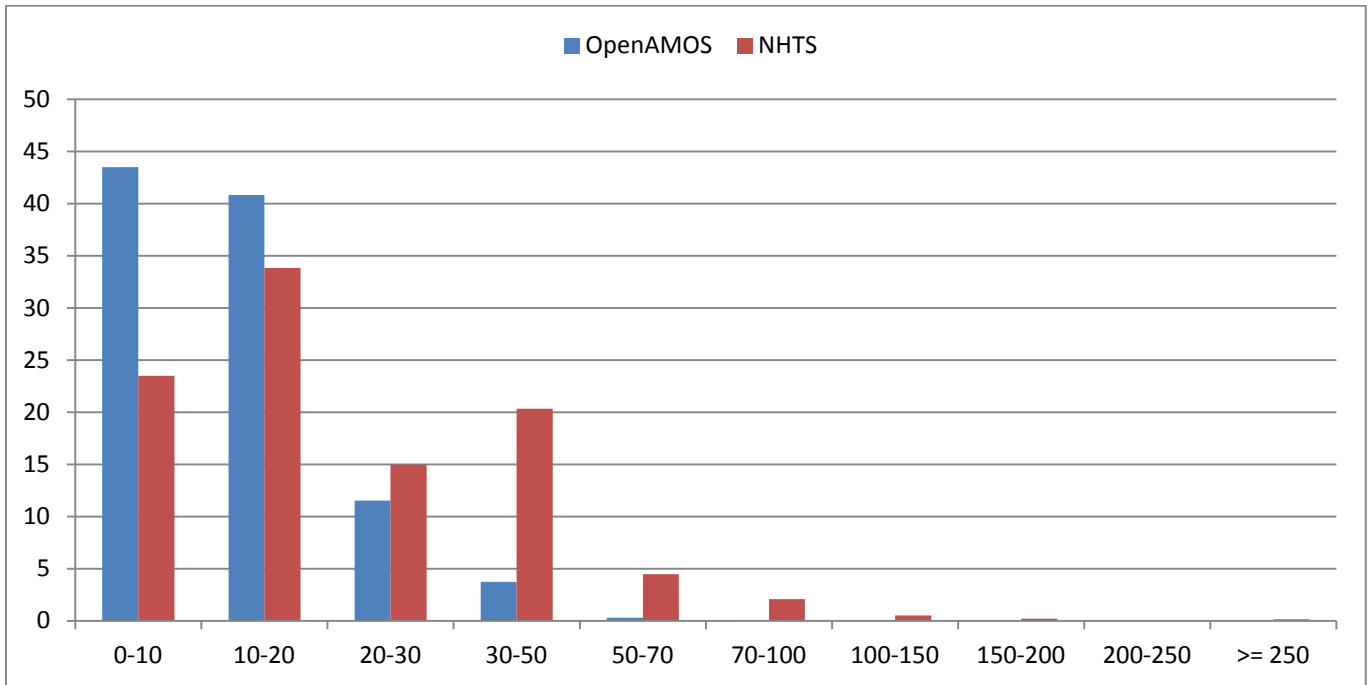
- *Trip duration distribution for pickup activities*



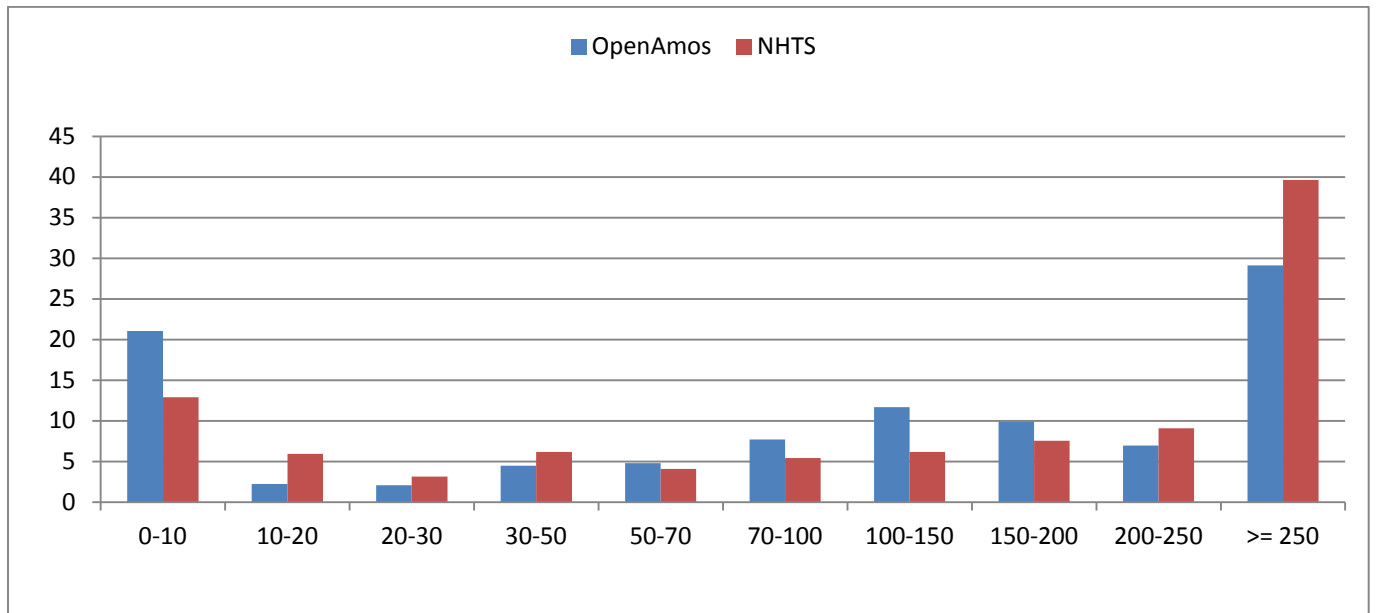
- *Trip duration distribution for drop-off activities*



- *Trip duration distribution for in-home activities*



10. Activity duration distribution

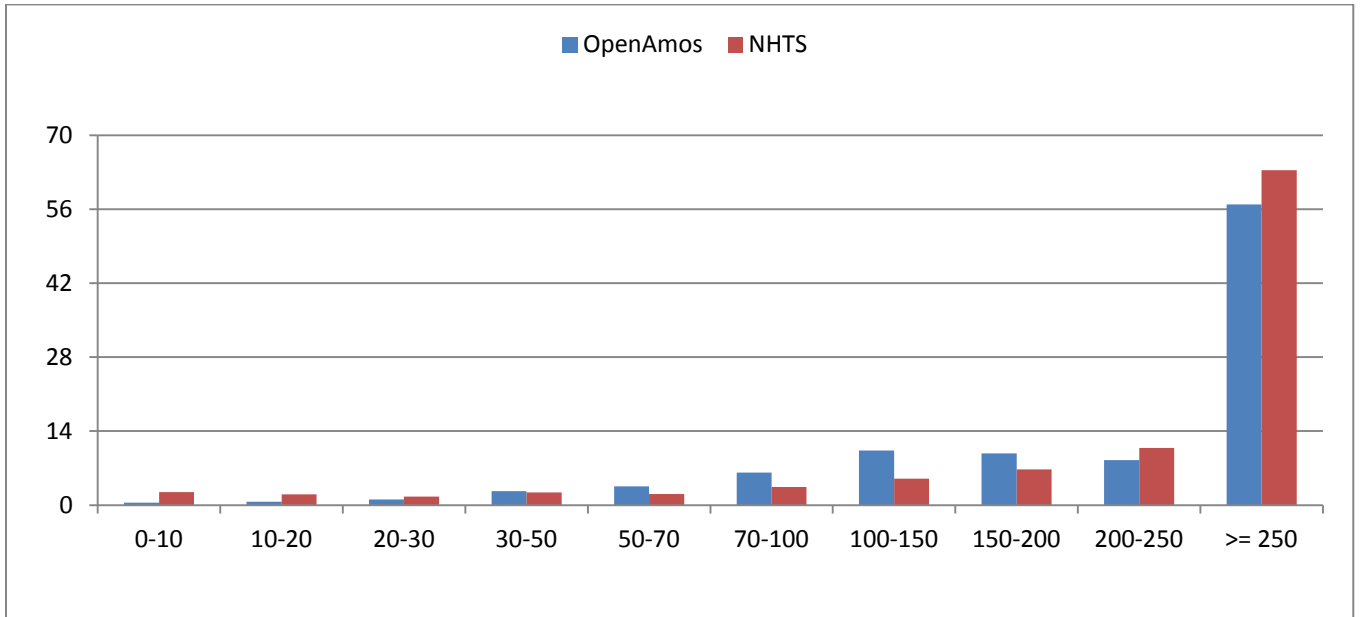


11. Activity duration distribution by purpose

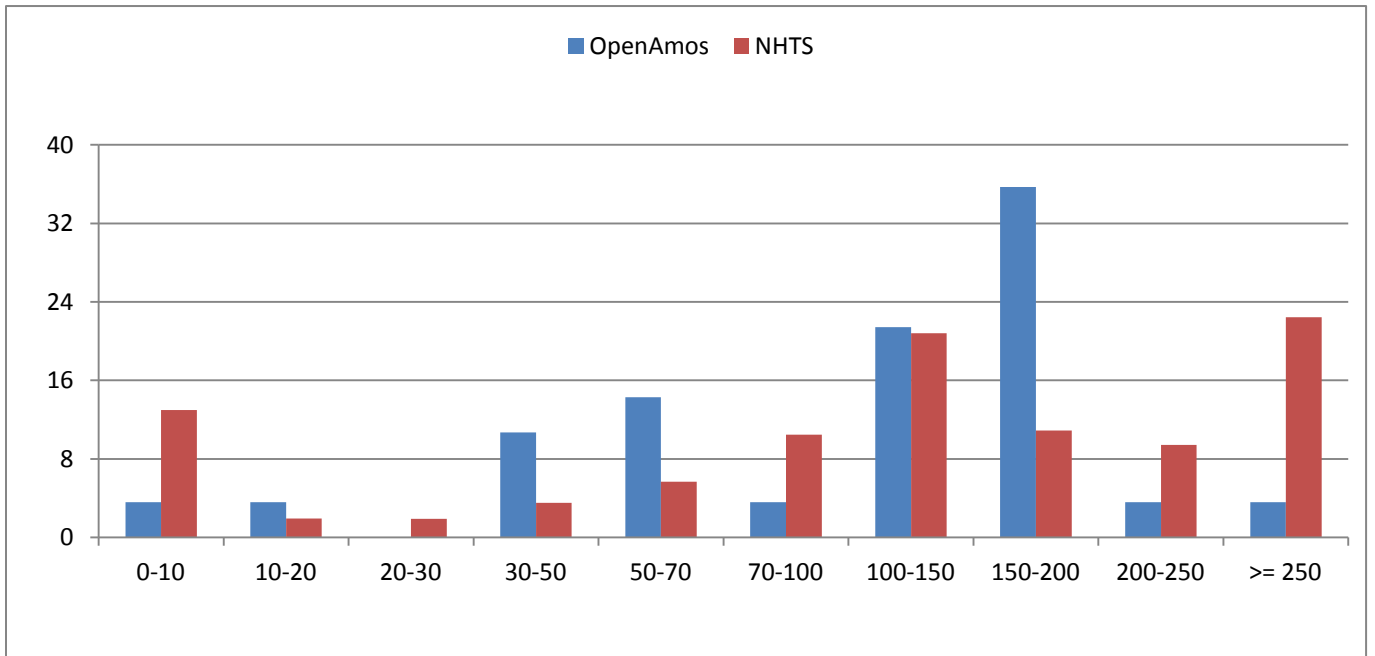
- *Average daily activity duration by purpose*

	Activity	
	OpenAMOS	NHTS
Home	886.85	766.06
Work	437.93	505.67
School	0.47	9.98
Maintenance	35.19	25.09
Discretionary	14.71	21.62
Pickup	0.76	1.87
Dropoff	1.29	1.33
Total	1377.19	1331.61

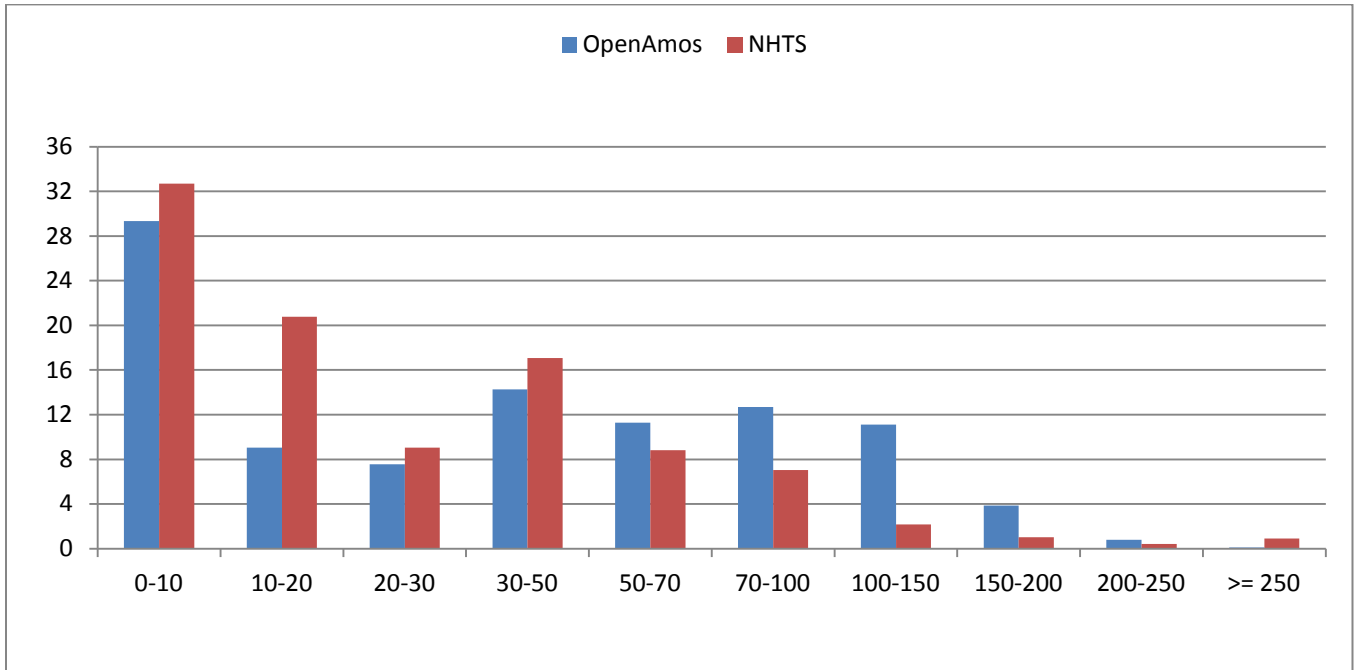
- Activity duration distribution for work



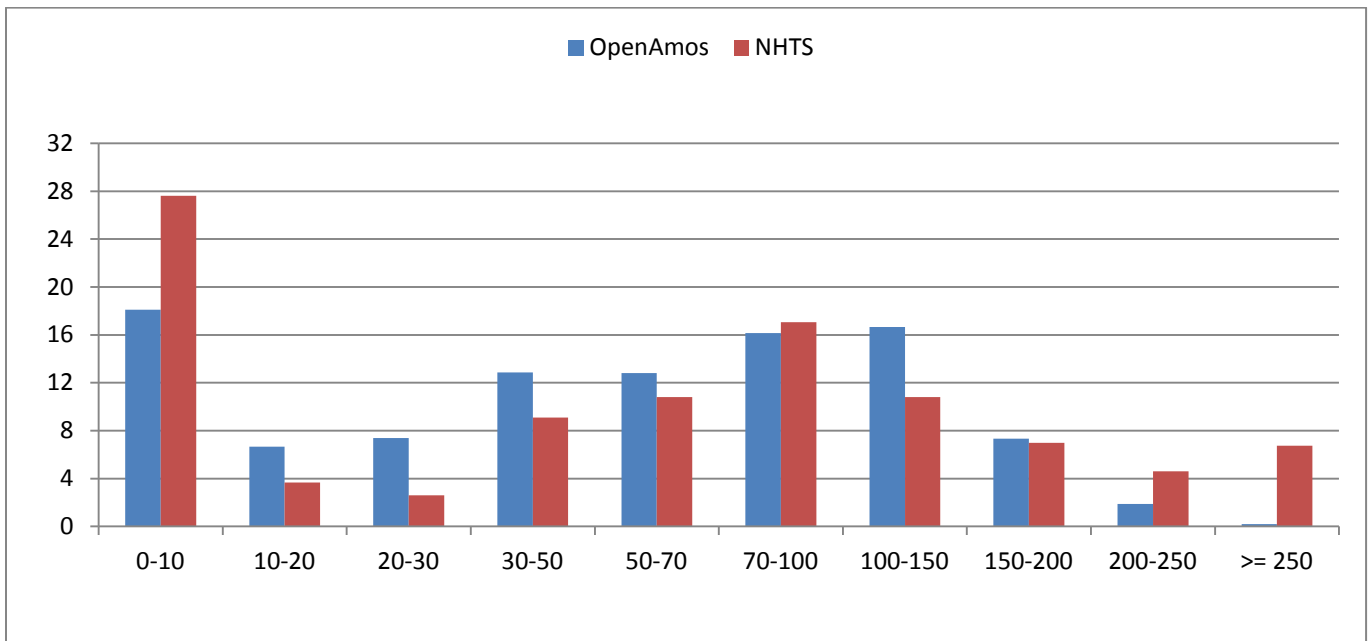
- Activity duration distribution for school



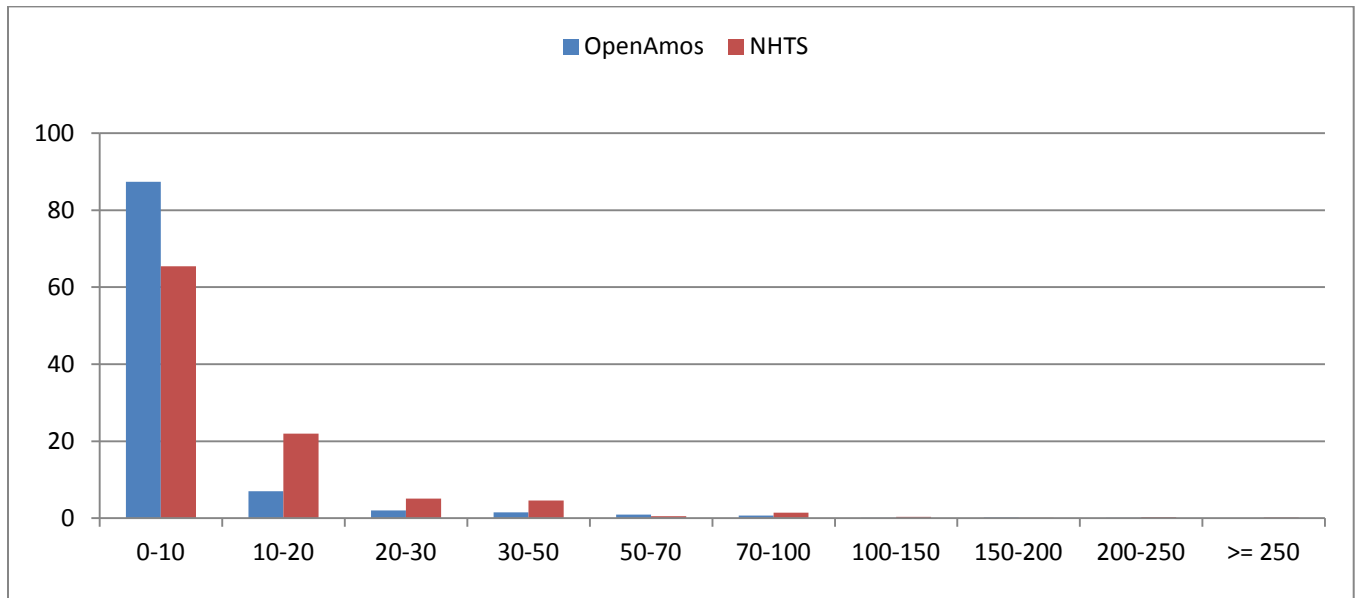
- Activity duration distribution for maintenance activities



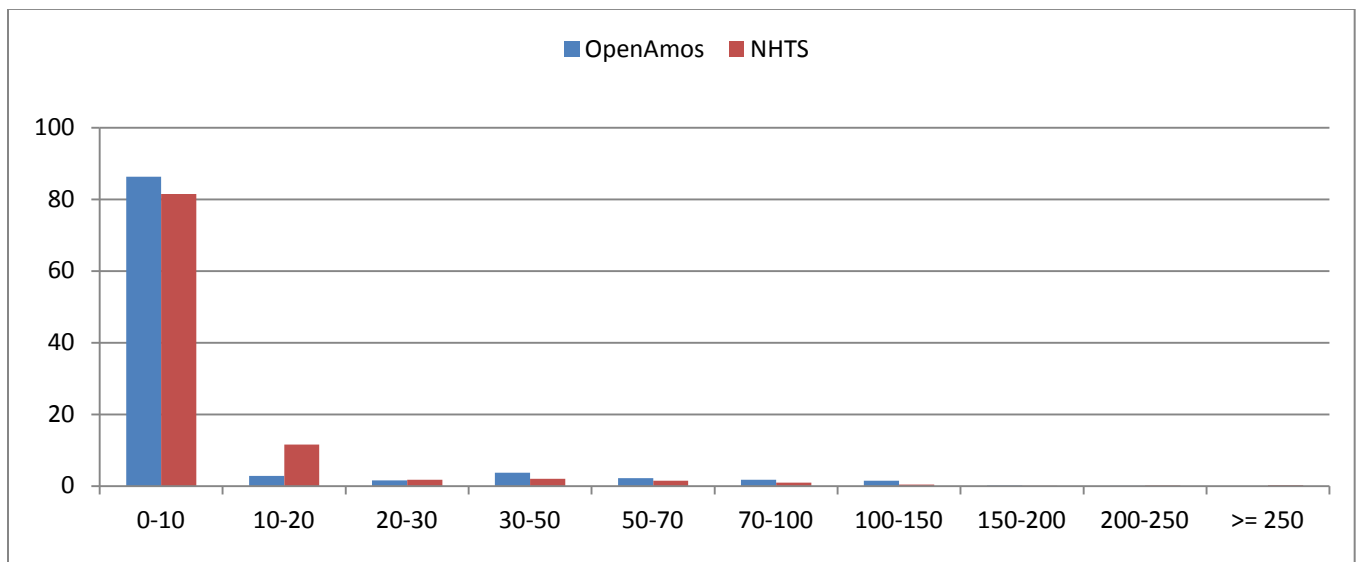
- Activity duration distribution for discretionary activities



- Activity duration distribution for pickup activities



- Activity duration distribution for drop-off activities



- *Activity duration distribution for in-home activities*

